

Архангельск (8182)63-90-72  
Астана (7172)727-132  
Астрахань (8512)99-46-04  
Барнаул (3852)73-04-60  
Белгород (4722)40-23-64  
Брянск (4832)59-03-52  
Владивосток (423)249-28-31  
Волгоград (844)278-03-48  
Вологда (8172)26-41-59  
Воронеж (473)204-51-73  
Екатеринбург (343)384-55-89  
Иваново (4932)77-34-06

Ижевск (3412)26-03-58  
Иркутск (395)279-98-46  
Казань (843)206-01-48  
Калининград (4012)72-03-81  
Калуга (4842)92-23-67  
Кемерово (3842)65-04-62  
Киров (8332)68-02-04  
Краснодар (861)203-40-90  
Красноярск (391)204-63-61  
Курск (4712)77-13-04  
Липецк (4742)52-20-81  
Киргизия (996)312-96-26-47

Магнитогорск (3519)55-03-13  
Москва (495)268-04-70  
Мурманск (8152)59-64-93  
Набережные Челны (8552)20-53-41  
Нижний Новгород (831)429-08-12  
Новокузнецк (3843)20-46-81  
Новосибирск (383)227-86-73  
Омск (3812)21-46-40  
Орел (4862)44-53-42  
Оренбург (3532)37-68-04  
Пенза (8412)22-31-16  
Казахстан (772)734-952-31

Пермь (342)205-81-47  
Ростов-на-Дону (863)308-18-15  
Рязань (4912)46-61-64  
Самара (846)206-03-16  
Санкт-Петербург (812)309-46-40  
Саратов (845)249-38-78  
Севастополь (8692)22-31-93  
Симферополь (3652)67-13-56  
Смоленск (4812)29-41-54  
Сочи (862)225-72-31  
Ставрополь (8652)20-65-13  
Таджикистан (992)427-82-92-69

Сургут (3462)77-98-35  
Тверь (4822)63-31-35  
Томск (3822)98-41-53  
Тула (4872)74-02-29  
Тюмень (3452)66-21-18  
Ульяновск (8422)24-23-59  
Уфа (347)229-48-12  
Хабаровск (4212)92-98-04  
Челябинск (351)202-03-61  
Череповец (8202)49-02-64  
Ярославль (4852)69-52-93

<http://hpmm.nt-rt.ru> || [hmp@nt-rt.ru](mailto:hmp@nt-rt.ru)



**FUEL INJECTOR TESTER & CLEANER**  
**OIL EXCHANGERS**  
**A/C RECOVERY & RECHARGE MACHINE**  
**FULL AUTOMATIC TIRE INFLATOR**  
**NITROGEN GENERATOR**  
**INDUSTRIAL HOSE REEL**  
**DIGITAL METER OIL CONTROL VALVE**  
**AIR OPERATED OIL & GREASE PUMPS**  
**MOBILE WASTE OIL TANK SERIES**  
**OIL DISPENSING CONTROL SYSTEM**





## COMPANY PROFILE

Since 2000 , HPMM has always been concentrating on providing high quality lubrication system and equipments for customers all over the world.

With the commitment to provide innovative products by high standard, HPMM has achieved good reputation in the industry as a leading manufacturer in designing and producing cost-effective lubrication and fluid management system . Meanwhile , we are so proud of owning the most knowledgeable service and technique department of China.

Our professional and experienced working team is always prepared to serve you, and we are looking forward to building win-win cooperation relationship with worldwide customers.









# Oil Management System

High quality and innovative express system allows to communicate on your incentive and promotion, could be more efficiently and precisely manage and distribute fluid.

New oil management system IRD (Industrial research and development) opens the new page of managing fluid distribution. A touch screen PLC makes your life easier through the software in your computer:

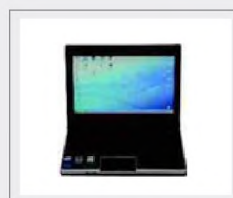
- Register all the operation process;
- Check the delivery detail.
- Check and manage the stock of fluid;
- Print operation journal;
- Data access by excel file, convenient to analyze.



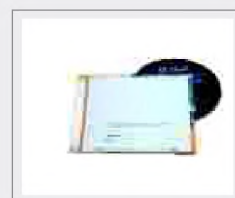
PLC BOX



GPV BOX



PC NETBOOK (optional)



SOFTWARE





# Oil Management System



## DISTRIBUTION POINTS



## WORKSHOP EQUIPMENTS



### 1. TANK STORAGE PLACE

The build of tank storage place should abide by the rules of oil storage, with clean and secure environment, tanks should be equipped with oil draining pan or with double skin intensity according to ISO-14001 norm:

- 1 tank 1000 liters double skin for engine oil 1(white color)
- 1 tank 1000 liters double skin for engine oil 2( white color)
- 1 tank 1000 liters double skin for waste oil (green color)
- 1 clean oil system (full automatic waste oil changer <green color>)

This place could also be equipped with anti-freeze windscreen, washer fluid drum and gear box oil drum according to the working needs of the workshop.

### 2. FLUID LINES (black, green, grey and blue)

- Oil line: connected with oil tank and distributions points;  
1 hose line R1AT 3/4" for engine oil 1 (black color)  
1 hose line R1AT 3/4" for engine oil 2 (black color)  
1 hose line R1AT 3/4" for waste oil 1 (green color)

- Computer network: Connect to GPV box, transfer data to HRRILUBE software:

1 computer wire RS 485 (WIFI is optional)

- Air line: Connect to air compressor, provide air to reels of distribution points.

### 3. OIL MANAGEMENT SYSTEM

Each touch screen box could manage 4 reels by below steps:

- Only authorized people to input the code for oil distribution;
- Input order repair number
- Choose the correct distribution point (1/2/3/4)
- Preset the required oil quantity
- Save the data

### 4. DISTRIBUTION POINTS

They are used for filling up oil tank, checking oil distribution and oil suction draining.

- 1 hose reel for engine oil 1, with oil meter gun and drop tray
- 1 hose reel for waste oil, with waste oil suction gun and drop tray
- 1 hose reel for air

### 5. GPV BOX

Physically operate to check the flow rate and stop the operation when the preset quantity is reached.

### 6. WORKSHOP REPAIR DEVICE

Oil draining unit, brakes bleeder, oil drainer/ oil changer are the absolute necessary equipments in modern workshops, they are precious to make the life easier and better for environment protection.



## OIL DISPENSING CONTROL SYSTEM

HPMCO-04 .....	07-08
HPCMCO-48 .....	09-14

## MOBILE WASTE OIL TANK SERIES

HD-2330 & HD-2350 .....	17
HD-2380 & HD-2390 .....	18
HC-2080 & HC-2081 .....	19
HC-2085 & HC-2090 .....	20
HC-2097 .....	21
HC-3280 & HC-3281 & HC-3285 .....	22
HC-3290 & HC-3297 .....	23
HC-3298 .....	24
HC-3285A .....	26
HG-32026 & HG-33026 & HG-33026A .....	27
HG-33026L & HG-33026L/A .....	28
HG-53026 & HG-53026A .....	29
HG-68012 & HG-68213 .....	30

## AIR OPERATED OIL & GREASE PUMPS

HG-1026 & HG-1027 & HG-1028 .....	33
HG-1029 .....	34
OIL PUMP PRESSURE RATE: 1:1 .....	35
72011270 1:1 OIL PUMP WALL MOUNTING UNIT	
OIL PUMP PRESSURE RATE: 3:1 .....	36
OIL PUMP PRESSURE RATE: 5:1 .....	36
50:1 AIR OPERATED GREASE PUMPS .....	37
61501480 50:1 Mobile Grease Pump Unit .....	38
61501940 50:1 Mobile Grease Pump Unit .....	38
61501948 50:1 Mobile Oil Pump Unit .....	39
80001050 STEEL DRUM TROLLY .....	40
80001208 STEEL DRUM TROLLY .....	40
80001200 STEEL DRUM TROLLY .....	40

## DIGITAL METER OIL CONTROL VALVE

Digital meter control valve oil control valve .....	43
Digital meter oil gun .....	44
Fre-selection digital meter control valve .....	45
Oil control vaver .....	46

## INDUSTRIAL HOSE REEL

IRN & IRE series .....	49
PL-HR series .....	50
PL-HD & PL-HG series .....	51
PL-GD/GDT series .....	52
IRB series .....	53
IRT & IRY series .....	54
PL-Z series .....	55
PL-ZM series .....	56

## NITROGEN GENERATOR

WS90-4FXII .....	59
WS90-FC & WS90-2FX .....	61
WS90-2FC & WS90-2FCX .....	61
WS90-2X & WS90-2C & WS90-2CX .....	62
WS90-4FX & WS90-4X .....	62
WS90-2FXII & WS90-2FCII .....	63
WS90-2FCXII & WS90-2XII .....	63
WS90-2CII & WS90-2CXII .....	64
WS90-4FXII & WS90-4XII .....	64
WS90-FC/MO & WS90-2FC/MO .....	65

## NITROGEN GENERATOR

HP-1350 & HP-1370B/DN .....	67
HP-1370A/EN & HP-1370A/FN .....	68
HP-1370A/MO & HP-1370A/LCD .....	69
HP-1390A/FN & HP-1390A/LCD .....	70
HP-1650 & HP-1670B/DN .....	71
HP-1670A/EN & HP-1670A/MO .....	72
HP-1690A/FN & HP-1690A/LCD .....	73
HP-2670A/EN & HP-2670A/FN .....	74
HP-2690A/4EN & HP-2690A/4FN .....	75
HP-3690A/4FN & HN-630B .....	76
HP-S1860 & HP-S1860A/EN .....	77
HN-6125M .....	78

## FULL AUTOMATIC TIRE INFALTOR

HJS701B & HJS701B-LX .....	81
HJS711B & HJS711B-LX .....	82
HJ921B & HJ921B-J .....	83
HJ921B-LX & HJ921B-JX .....	84
HJ931B & HJ931B-J .....	85
HJ931B-LX & HJ931B-JX .....	86
HJ931BD & HJ931BD-J .....	87
HJ931BD-JX & HJ931BD-LX .....	88
HJ951B & HJ951B-LX & HJ951B-JX .....	89
HJ951BD & HJ951BD-LX & HJ951BD-JX .....	90
HJ961B & HJ961B-LX & HJ961B-JX .....	91
HJ961BD & HJ961BD-LX & HJ961BD-JX .....	92

## AIR CONDITIONER REFRIGERANT RECOVERY & RECHARGE MACHINE

PL-AC100 & PL-AC200 .....	95
PL-AC300 & PL-AC300B .....	96
PL-AC500 & HM-50 .....	97

## OIL/FLUID EXCHANGER

GD-322LCD & GA-322 & GD-322 .....	100
GB-522 & GD-522A & GC-622 & GD-622A .....	101
GL-122 & GD-122 & GF-220&GD-220 .....	102
GD-422 .....	103
GS-432 & GS-452 .....	104

## FUEL INJECTOR TESTER & CLEANER

HP-4 & HP-4A&HP-4B .....	107
HP-6 & HP-6A&HP-6B&HP-6C .....	108
HP-8 & HP-8A&HP-8B .....	109
HP-2M & HP-7C&HP-7E .....	110
Memo .....	113
Memo .....	114





## TABLE OF CONTENTS



05

OIL DISPENSING CONTROL SYSTEM



15

MOBILE WASTE OIL TANK SERIES



31

AIR OPERATED OIL & GREASE PUMPS



41

DIGITAL METER OIL CONTROL VALVE



47

INDUSTRIAL HOSE REEL



57

NITROGEN GENERATOR



79

FULL AUTOMATIC TIRE INFLATOR



93

AIR CONDITIONER REFRIGERANT  
RECOVERY & RECHARGE MACHINE



98

OIL EXCHANGERS



105

FUEL INJECTOR TESTER & CLEANER



Oil dispensing control system is an integrated system for managing and controlling the dispensing of fluids in maintenance facilities.





The image shows an oil dispensing control system. At the top, three white rectangular control units are mounted on a horizontal metal rail. Each unit is connected to a network of pipes and hoses. A small control box is attached to the leftmost unit. Three long, thin black hoses hang vertically from the rail. At the bottom of each hose is a metal mounting plate with a black and red oil nozzle. The background is a blurred industrial setting with a large cylindrical tank.

# OIL DISPENSING CONTROL SYSTEM

OIL DISPENSING  
CONTROL SYSTEM



## CONNECTION STRUCTURE FOR 1 TYPE OF OIL

Pick any single oil distribution gun for refueling



### FEATURES

- \* INSERT PASSWORD FOR REFUELING



- \* ACCURATE FLOW RATE CONTROL



### SOLE CONSOLE



### FUNCTION

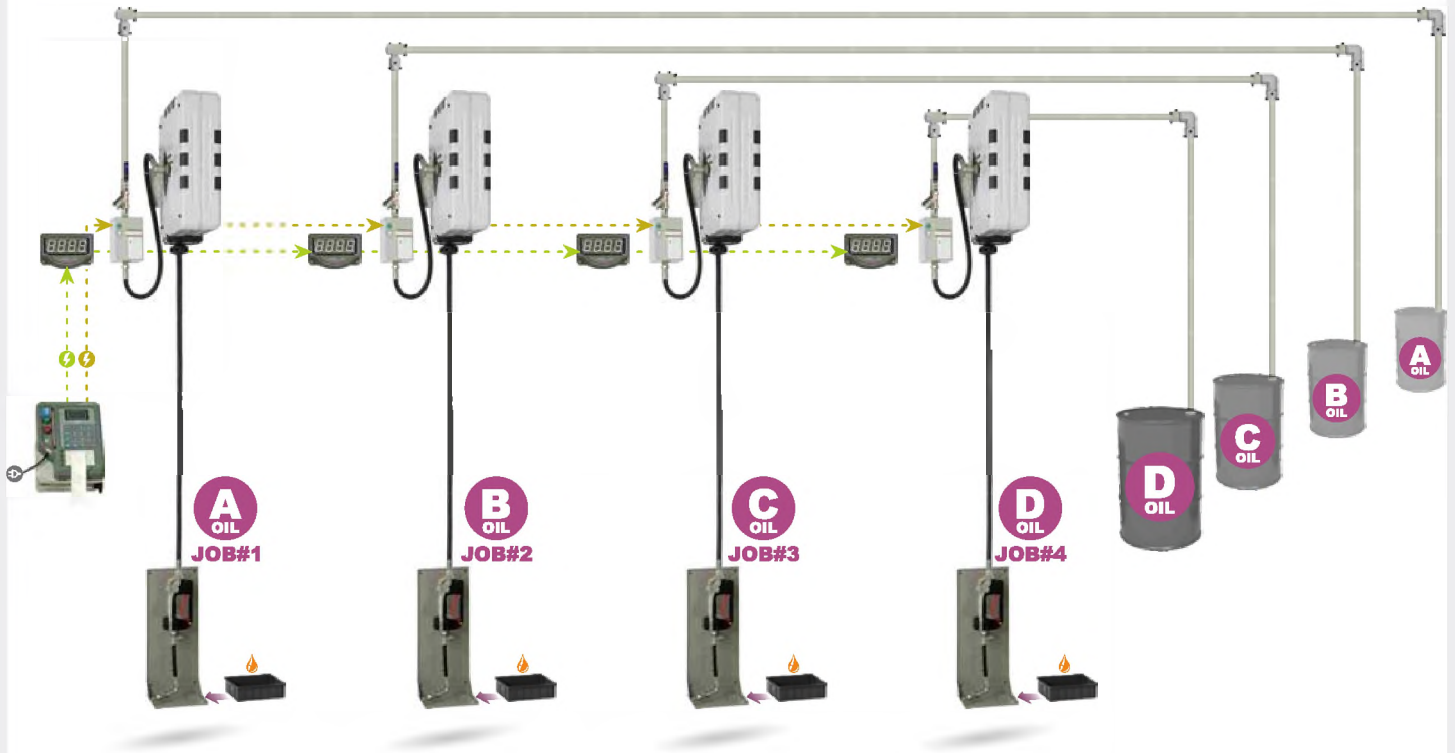
> System:	HPMCO-04
> Languages:	CN/EN/RU
> Voltage:	AC220V/1PH/50Hz
> Precision:	±3‰
> Temperature:	-30~70℃
> Humidity:	40%~80%
> Job number:	1~4
> Maximum storage:	300 records
> Maximum job numbers:	1
> Oil pump(pressure ratio):	3:1/5:1
> Pipe pressure:	< 70bar
> Oil type:	Gear oil, Engine lubricating oil (Max viscosity:SAE240)
> Hose reel:	IRN2104/IRE2104
> Oil distribution gun:	digital meter control gun /oil gun





## CONNECTION STRUCTURE FOR 1~4 TYPE OF OIL

Pick any single oil distribution gun for refueling



### FUNCTION

> System:	HPMCO-04
> Languages:	CN/EN/RU
> Voltage:	AC220V/1PH/50Hz
> Precision:	±3‰
> Temperature:	-30~70℃
> Humidity:	40%~80%
> Job number:	1~4
> Maximum storage:	300 records
> Maximum job numbers:	1
> Oil pump(pressure ratio):	3:1/5:1
> Pipe pressure:	< 70bar
> Oil type:	Gear oil, Engine lubricating oil (Max viscosity:SAE240)
> Hose reel:	IRN2104/IRE2104
> Oil distribution gun:	digital meter control gun / oil gun

### FEATURES

\* INSERT PASSWORD FOR REFUELING

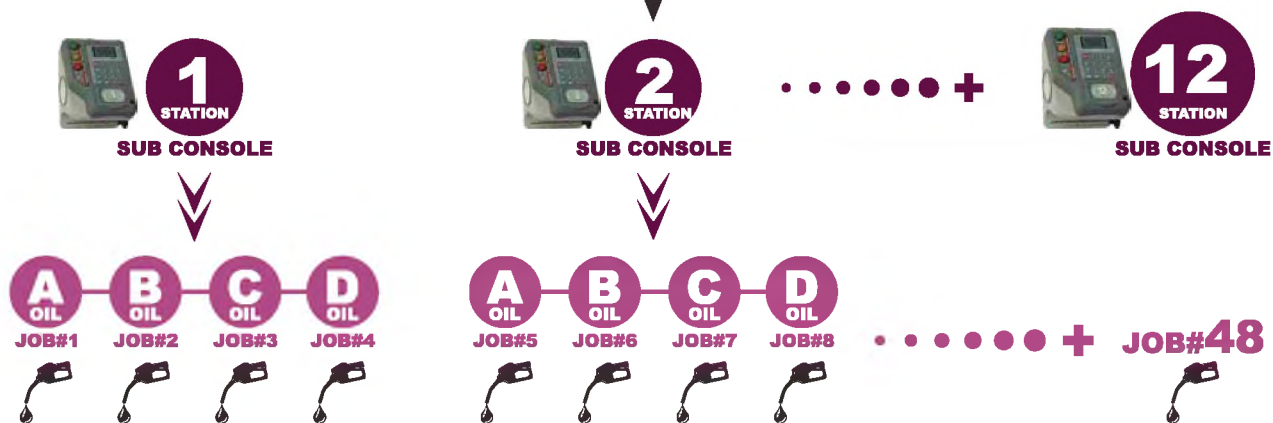
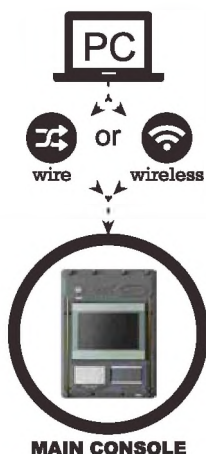


\* ACCURATE FLOW RATE CONTROL



### SOLE CONSOLE





**FEATURES**

\* INSERT PASSWORD FOR REFUELING



\* ACCURATE FLOW RATE CONTROL



\* HPCMCO-48 is able to control up to 4 types of oils with maximum 4 job numbers for dispensing simultaneously under 4 independent stations.

\* Optional: More than 4 types of oils  
 \* Generate independent codes to review past datas, keep track of each record  
 \* Memory storage up to 13 months

**SOLE CONSOLE**



Paper towel hanger

Extra space storage:  
Iphone, paper etc.

**FUNCTION**

>   System:	HPCMCO-48
>   Languages:	CN/EN/RU
>   Voltage:	AC220V/1PH/50Hz
>   Precision:	±3‰
>   Temperature:	-30~70℃
>   Humidity:	40%~80%
>   Job number:	2~48
>   Maximum storage:	13 months
>   Maximum job numbers:	4 (simultaneous)
>   Oil pump (pressure ratio):	3:1/5:1
>   Pipe pressure:	< 70bar
>   Oil type:	Gear oil, Engine lubricating oil (Max viscosity:SAE240)
>   Hose reel:	IRN2104/IRE2104
>   Oil distribution gun:	digital meter control gun /oil gun



## FUNCTIONAL DIAGRAM FOR MAIN CONSOLE



## ACCESSORIES

**MAIN CONSOLE**



**SOLE CONSOLE**



**SUB CONSOLE**



**LED FLUID DISPLAY UNIT**

Convenient for observing the oil mass from distance.



**FLOW METER CONTROL BOX**  
precise control of oil qty



## TYPES OF HOSE REEL FOR YOUR SELECTION



**A**



**B**

## HIGH STRENGTH PIPE CONNECTOR

Unique design.  
Quick installation, save time and labour.  
Tested by 120bar high pressure without oil leakage.



**FILTRATION VALVE**

**BALL VALVE**





## ACCESSORIES

### LIQUID LEVEL DETECTOR WITH ALARM SYSTEM

provides automated safety protection and emergency shut-down function to ensure its flow precision before the drum is emptied.



### PNEUMATIC OIL PUMP



PRESSURE RATIO 3:1 / 5:1

### OIL CONTROL VALVE



**70989023**

PRE-SELECTION DIGITAL  
METER CONTROL VALVE



**70981023**

DIGITAL METER  
CONTROL VALVE



**70980023**

OIL CONTROL VALVE

### SET OF OIL DRAIN TRAY



The air-operated suction is ideal for engine oil change of any motor vehicle, are carried out by an air operated vacuum pump. Using a probe or connector inserted into the oil level gauge to suck waste oil. Once depressurized, It can work autonomously anywhere. It does not require continuous connection to the compressed air system.

02



# MOBILE WASTE OIL TANK SERIES



MOBILE WASTE  
OIL SUCTION



#### HD-2330 PARAMETERS

> Tank capacity(Liter/US Gallon)	/
> Power supply(v/hz/ph)	AC220V/50HZ/1PH
> power(w)	≤370
> Oil ejection pressure(lbar/psi)	0.5/7
> Air Inlet Connection	/
> Oil Temperature Range(°C)	40-60
> Modular cylinder capacity(Liter/US Gallon)	9/2.4
> Suction Speed(Liter/m/US Gallon/m)	1.5 ~ 2/0.4 ~ 0.5
> Suction Hose(dia.@length)	φ19*1.5m
> Draining Hose(dia.@length)	/
> Collection Bowl Capacity(Liter/US Gallon)	/
> Collection Bowl Diameter(mm)	/
> Maximum Height(mm)	/
> Min Height(mm)	750
> Optional Extension Funnel Diameter(mm)	/
> N.W.(kgs)	19.5/20.5
> Dimension(mm):	360*290*750



#### HD-2350 PARAMETERS

> Tank capacity(Liter/US Gallon)	/
> Power supply(v/hz/ph)	AC220V/50HZ/1PH
> power(w)	≤370
> Oil ejection pressure(lbar/psi)	0.5/7
> Air Inlet Connection	/
> Oil Temperature Range(°C)	40-60
> Modular cylinder capacity(Liter/US Gallon)	11/2.9
> Suction Speed(Liter/m/US Gallon/m)	1.5 ~ 2/0.4 ~ 0.5
> Suction Hose(dia.@length)	φ19*1.5m
> Draining Hose(dia.@length)	/
> Collection Bowl Capacity(Liter/US Gallon)	/
> Collection Bowl Diameter(mm)	/
> Maximum Height(mm)	/
> Min Height(mm)	980
> Optional Extension Funnel Diameter(mm)	/
> N.W.(kgs)	22.5/25
> Dimension(mm):	450*450*980



### HD-2380 PARAMETERS

> Tank capacity(Liter/US Gallon)	50/13
> Power supply(v/hz/ph)	AC220V/50HZ/1PH
> power(w)	≤370
> Oil ejection pressure(lbar/psi)	0.5/7
> Air Inlet Connection	/
> Oil Temperature Range(°C)	40-60
> Modular cylinder capacity(Liter/US Gallon)	9/2.4
> Suction Speed(Liter/m/US Gallon/m)	1.5 ~ 2/0.4 ~ 0.5
> Suction Hose(dia.@length)	φ19*1.5m
> Draining Hose(dia.@length)	φ19*1.5m
> Collection Bowl Capacity(Liter/US Gallon)	/
> Collection Bowl Diameter(mm)	/
> Maximum Height(mm)	/
> Min Height(mm)	1260
> Optional Extension Funnel Diameter(mm)	/
> N.W.(kgs)	32/35
> Dimension(mm):	500*455*1265



### HD-2390 PARAMETERS

> Tank capacity(Liter/US Gallon)	50/13
> Power supply(v/hz/ph)	AC220V/50HZ/1PH
> power(w)	≤ 370
> Oil ejection pressure(lbar/psi)	0.5/7
> Air Inlet Connection	/
> Oil Temperature Range(°C)	40-60
> Modular cylinder capacity(Liter/US Gallon)	9/2.4
> Suction Speed(Liter/m/US Gallon/m)	1.5 ~ 2/0.4 ~ 0.5
> Suction Hose(dia.@length)	φ19*1.5m
> Draining Hose(dia.@length)	φ19*1.5m
> Collection Bowl Capacity(Liter/US Gallon)	16/4.2
> Collection Bowl Diameter(mm)	400
> Maximum Height(mm)	1940
> Min Height(mm)	1500
> Optional Extension Funnel Diameter(mm)	560
> N.W.(kgs)	36/42
> Dimension(mm):	500*455*1265/450*450*300





## FEATURES

- Strong vacuum extraction system, fast, safe and easy extract used oil and other fluids out from vehicles.
- Suitable for cars, boats, motorcycles and small engines.
- Equipped with steel probe holder which is never broken and provide safe protection for suction probes.
- Many diameter of probes (included 5mm, 6mm, 7mm, 8mm) made by copper and flexible PVC.
- Dia. 5mm probe and different color probes are optional. Dia. 5mm probe can provide a faster suction speed due to over-thin thickness of the PVC material.
- Power from air compressor, safe and easy operation.

## HC -2080 PARAMETERS

> Tank capacity(Liter/US Gallon)	65/17.1
> Air Inlet Pressure(bar/psi)	6-8/87-116
> Air Inlet Connection(inch)	1/4"
> Vacuum Degree(bar)	-1-0
> Air Pressure for Oil Discharge(bar/psi)	0.7-1/10-15
> Oil Temperature Range( C)	40-60
> Suction Speed@Probe dia. ø8 & Oil 60 C(Liter/m/US Gallon/m)	6.5/1.72
> Suction Hose(dia. @length)	φ19*1.5m
> Draining Hose(dia. @length)	φ19*1.5m
> Collection Bowl Capacity(Liter/US Gallon)	/
> Collection Bowl Diameter(mm)	/
> Maximum Height(mm)	/
> Min Height(mm)	890
> Optional Extension Funnel Diameter(mm)	/
> N.W./G.W.(kgs)	16.3/18.5
> Dimension(mm)	470*400*940



## FEATURES

- Suitable for cars, boats, motorcycles and small engines.
- Power from air compressor, safe and easy operation.

## HC -2081 PARAMETERS

> Tank capacity(Liter/US Gallon)	65/17.1
> Air Inlet Pressure(bar/psi)	6-8/87-116
> Air Inlet Connection(inch)	1/4"
> Vacuum Degree(bar)	/
> Air Pressure for Oil Discharge(bar/psi)	0.7-1/10-15
> Oil Temperature Range( C)	40-60
> Suction Speed@Probe dia. ø8 & Oil 60 C(Liter/m/US Gallon/m)	/
> Suction Hose(dia. @length)	/
> Draining Hose(dia. @length)	φ19*1.5m
> Collection Bowl Capacity(Liter/US Gallon)	16/4.2
> Collection Bowl Diameter(mm)	400
> Maximum Height(mm)	1680
> Min Height(mm)	1025
> Optional Extension Funnel Diameter(mm)	560
> N.W./G.W.(kgs)	16.6/19.1
> Dimension(mm)	470*440*940

## FEATURES

- Strong vacuum extraction system, fast, safe and easy extract used oil and other fluids out from vehicles.
- Suitable for cars, boats, motorcycles and small engines.
- Equipped with steel probe holder which is never broken and provide safe protection for suction probes.
- Many diameter of probes (included 5mm, 6mm, 7mm, 8mm) made by copper and flexible PVC.
- Dia 5mm probe and different color probes are optional. Dia 5mm probe can provide a faster suction speed due to over-thin thickness of the PVC material.
- Power from air compressor, safe and easy operation.

## HC -2085 PARAMETERS

>   Tank capacity(Liter/US Gallon)	65/17.1
>   Air Inlet Pressure(bar/psi)	6-8/87-116
>   Air Inlet Connection(inch)	1/4"
>   Vacuum Degree(bar)	-1-0
>   Air Pressure for Oil Discharge(bar/psi)	0.7-1/10-15
>   Oil Temperature Range( C)	40-60
>   Suction Speed@Probe dia. $\phi 8$ & Oil 60 C(Liter/m/US Gallon/m)	6.5/1.72
>   Suction Hose(dia. @length)	$\phi 19$ *1.5m
>   Draining Hose(dia. @length)	$\phi 19$ *1.5m
>   Collection Bowl Capacity(Liter/US Gallon)	16/4.2
>   Collection Bowl Diameter(mm)	/
>   Maximum Height(mm)	/
>   Min Height(mm)	/
>   Optional Extension Funnel Diameter(mm)	/
>   N.W./G.W.(kgs)	18.5/21
>   Dimension(mm)	470*440*940



## FEATURES

- Exclusive patented self-explosion-protection device
- Be equipped with a transparent chamber to observe the waste oil before extract into the tank

## HC -2090 PARAMETERS

>   Tank capacity(Liter/US Gallon)	65/17.1
>   Air Inlet Pressure(bar/psi)	6-8/87-116
>   Air Inlet Connection(inch)	1/4"
>   Vacuum Degree(bar)	-1-0
>   Air Pressure for Oil Discharge(bar/psi)	0.7-1/10-15
>   Oil Temperature Range( C)	40-60
>   Suction Speed@Probe dia. $\phi 8$ & Oil 60 C(Liter/m/US Gallon/m)	6.5/1.72
>   Modular cylinder capacity(Liter/US Gallon)	9/2.4
>   Suction Hose(dia. @length)	$\phi 19$ *1.5m
>   Draining Hose(dia. @length)	$\phi 19$ *1.5m
>   Collection Bowl Capacity(Liter/US Gallon)	/
>   Collection Bowl Diameter(mm)	/
>   Maximum Height(mm)	/
>   Min Height(mm)	1250
>   Optional Extension Funnel Diameter(mm)	/
>   N.W./G.W.(kgs)	19.6/22.5
>   Dimension(mm)	470*400*940/270*270*575







## FEATURES

- Exclusive patented self-explosion-protection device
- With a special handle bar to make the oil tray easy up and down
- Be equipped with a transparent chamber to observe the waste oil before extract into tank.
- Be equipped with a ball valve for the oil tray to inspect waste oil before entering the tank.

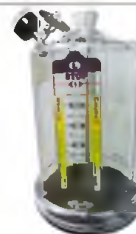
## HC -2097 PARAMETERS

→ Tank capacity(Liter/US Gallon)	65/17.1
→ Air Inlet Pressure(bar/psi)	6-8/87-116
→ Air Inlet Connection(inch)	1/4"
→ Vacuum Degree(bar)	-1-0
→ Air Pressure for Oil Discharge(bar/psi)	0.7-1/10-15
→ Oil Temperature Range( C)	40-60
→ Suction Speed@Probe dia. ϕ8 & Oil 60 C(Liter/m/US Gallon·m)	6.5/1.72
→ Modular cylinder capacity(Liter/US Gallon)	9/2.4
→ Suction Hose(dia. @length)	ϕ19*1.5m
→ Draining Hose(dia. @length)	ϕ19*1.5m
→ Collection Bowl Capacity(Liter/US Gallon)	16/4.2
→ Collection Bowl Diameter(mm)	400
→ Maximum Height(mm)	1680
→ Min Height(mm)	1400
→ Optional Extension Funnel Diameter(mm)	560
→ N.W./G.W.(kgs)	21.3/24.5
→ Dimension(mm)	470*440*940/270*270*575

## BASIC 20 SERIES FEATURES: NEW UPGRADED DESIGN

### Modular cylinder

The new cylinder adopts integrated transparent design, with metal gland seal, can endure 95-100°C temperature. Corrosion resistant, easy to clean.



### Vacuum generator

With smart design, integrated with modular cylinder, pressure meter can be rotated by 360°. (Add three protection holders on new HC-2085)



### Tank

Adopt advanced and complicated welding technology, more beautiful than old tank.



### HC-3280 PARAMETERS

> Tank capacity(Liter/US Gallon)	80/21
> Air Inlet Pressure(bar/psi)	6-8/87-116
> Air Inlet Connection(inch)	1/4"
> Vacuum Degree(bar)	-1-0
> Air Pressure for Oil Discharge(bar/psi)	0.7-1/10-15
> Oil Temperature Range( C)	40-60
> Suction Speed@Probe dia. ø8 & Oil 60 C(Liter/m/US Gallon/m)	6.5/1.72
> Suction Hose(dia. @length)	φ19*2m
> Draining Hose(dia. @length)	φ25*2m
> Min Height(mm)	960
> N.W./G.W.(kgs)	19.5/23
> Dimension(mm)	540*440*975



### HC-3281 PARAMETERS

> Tank capacity(Liter/US Gallon)	80/21
> Air Inlet Pressure(bar/psi)	6-8/87-116
> Air Inlet Connection(inch)	1/4"
> Vacuum Degree(bar)	/
> Air Pressure for Oil Discharge(bar/psi)	0.7-1/10-15
> Oil Temperature Range( C)	40-60
> Suction Speed@Probe dia. ø8 & Oil 60 C(Liter/m/US Gallon/m)	/
> Suction Hose(dia. @length)	/
> Draining Hose(dia. @length)	φ25*2m
> Collection Bowl Capacity(Liter/US Gallon)	20/5.3
> Collection Bowl Diameter(mm)	400
> Maximum Height(mm)	1890
> Min Height(mm)	1270
> Optional Extension Funnel Diameter(mm)	560
> N.W./G.W.(kgs)	24.4/28
> Dimension(mm)	550*450*1010



### HC-3285 PARAMETERS

> Tank capacity(Liter/US Gallon)	80/21
> Air Inlet Pressure(bar/psi)	6-8/87-116
> Air Inlet Connection(inch)	1/4"
> Vacuum Degree(bar)	-1-0
> Air Pressure for Oil Discharge(bar/psi)	0.7-1/10-15
> Oil Temperature Range( C)	40-60
> Suction Speed@Probe dia. ø8 & Oil 60 C(Liter/m/US Gallon/m)	6.5/1.72
> Suction Hose(dia. @length)	φ19*2m
> Draining Hose(dia. @length)	φ25*2m
> Collection Bowl Capacity(Liter/US Gallon)	20/5.3
> Collection Bowl Diameter(mm)	400
> Maximum Height(mm)	1890
> Min Height(mm)	1250
> Optional Extension Funnel Diameter(mm)	560
> N.W./G.W.(kgs)	26/29.5
> Dimension(mm)	550*450*1010





#### HC-3290 PARAMETERS

> Tank capacity(Liter/US Gallon)	80/21
> Air Inlet Pressure(bar/psi)	6-8/87-116
> Air Inlet Connection(inch)	1/4"
> Vacuum Degree(bar)	-1~0
> Air Pressure for Oil Discharge(bar/psi)	0.7~1/10~15
> Oil Temperature Range( °C)	40~60
> Suction Speed@Probe dia. ø8 & Oil 60 °C(Liter/m/US Gallon/m)	6.5/1.72
> Modular cylinder capacity(Liter/US Gallon)	11/2.9
> Suction Hose(dia.@length)	φ19*2m
> Draining Hose(dia.@length)	φ25*2m
> Collection Bowl Capacity(Liter/US Gallon)	/
> Collection Bowl Diameter(mm)	/
> Maximum Height(mm)	/
> Min Height(mm)	1360
> Optional Extension Funnel Diameter(mm)	/
> N.W./G.W.(kgs)	22/27
> Dimension(mm)	555*445*1405



#### HC-3297 PARAMETERS

> Tank capacity(Liter/US Gallon)	80/21
> Air Inlet Pressure(bar/psi)	6-8/87-116
> Air Inlet Connection(inch)	1/4"
> Vacuum Degree(bar)	-1~0
> Air Pressure for Oil Discharge(bar/psi)	0.7~1/10~15
> Oil Temperature Range( °C)	40~60
> Suction Speed@Probe dia. ø8 & Oil 60 °C(Liter/m/US Gallon/m)	6.5/1.72
> Modular cylinder capacity(Liter/US Gallon)	11/2.9
> Suction Hose(dia.@length)	φ19*2m
> Draining Hose(dia.@length)	φ25*2m
> Collection Bowl Capacity(Liter/US Gallon)	20/5.3
> Collection Bowl Diameter(mm)	400
> Maximum Height(mm)	1890
> Min Height(mm)	1590
> Optional Extension Funnel Diameter(mm)	560
> N.W./G.W.(kgs)	31/36
> Dimension(mm)	550*445*1460



### HC-3298 PARAMETERS

> Tank capacity(Liter/US Gallon)	80/21
> Air Inlet Pressure(bar/psi)	6-8/87-116
> Air Inlet Connection(inch)	1/4"
> Vacuum Degree(bar)	-1~0
> Air Pressure for Oil Discharge(bar/psi)	0.7~1/10~15
> Oil Temperature Range( °C)	40-60
> Suction Speed@Probe dia. ϕ8 & Oil 60 °C(Liter/m/US Gallon/m)	6.5/1.72
> Modular cylinder capacity(Liter/US Gallon)	11/2.9
> Suction Hose(dia.@length)	ϕ19*2m
> Draining Hose(dia.@length)	ϕ25*2m
> Collection Bowl Capacity(Liter/US Gallon)	20/5.3
> Collection Bowl Diameter(mm)	400
> Maximum Height(mm)	1890
> Min Height(mm)	1670
> Optional Extension Funnel Diameter(mm)	560
> N.W./G.W.(kgs)	42/47
> Dimension(mm)	550*445*1460



### Feature:

#### Modular Cylinder

- 1.Special design for mould to enhance the intensity, 3 times higher intensity than other common products, can not be bent or broken if drop from 1m in height.
- 2.Adopt more reliable quality for the material. Normal working temperature 40–60°C,our cylinder can work under 120°C oil(destroy test). For other brand cylinders,100°C oil will destroy the cylinder completely.
- 3.Special cylinder structure reduces leakage problem a lot.



#### Vacuum Generator

- 1.Made by modular device, standard and reliable.
- 2.Small & smart in design with 30% higher efficiency than other brand products.

#### Suction(Exaction Speed)

- 1.39–73%higher suction speed than other brand products.

#### Anti-explosion Valve

- 1.Effectively protect the organic glass from explosion if the operator makes any mistakes.
- 2.We own international patent for this anti-explosion valve.



#### Oil Display Scale

1. Over-large oil display scale, easy for viewing.
2. Easy and fast for dismantling.

#### Hose Stand

1. Hose can be hung on it, easy and clean.
2. Convenient for next time usage.



#### Support Stand

1. Protection for organic glass and support for oil tray.
2. Ensure safe during transportation.
3. Coil paper roller can be hung on the central pole.



#### Oil Tray

1. Shaped by modular hydraulic press which is standard and reliable.
2. Optional over-large extension oil tray, designed for anti-splatter.
3. 360° swivel.
4. Inside metal strainer.



#### Waste Oil Collection Cup

1. The transparent waste oil collection cup ensures your working environment always clean.



#### Lift Handle Bar

1. Easy to lift up & down the oil tray.
2. Inside 2 hexagon screws on the handle bar can be fixed to the pole at any certain height.



#### Oil Tank

1. Shaped by modular hydraulic press which is standard and reliable.
2. High intensity for the tank body, special design and better appearance.
3. Outside appearance patent.



## FEATURES

- Exclusive patented self-explosion-protection device.
- Be equipped with a transparent chamber to observe the waste oil before extract into the tank.
- Be equipped with a ball valve for the oil tray to inspect waste oil before entering the tank.

## HC-3285A PARAMETERS

>   Air Inlet Pressure(bar/psi)	6~8/87~116
>   Air Inlet Connection(inch)	1/4"
>   Vacuum Degree(bar)	-1~0
>   Air Pressure for Oil Discharge(bar/psi)	0.7~1/10~15
>   Suction Speed@Probe dia. ø8 & Oil 60 °C(Liter/m/US Gallon/m)	6.5/1.72
>   N.W./G.W.(kgs)	46/50
>   Tank package dimension(mm)	570*540*1020
>   support frame package dimension(mm)	1310*100*80
>   Tray package dimension(mm)	735*635*225



Collection Bowl  
Capacity  
48L/12.7US gal

Tray raise and fall  
Max height 1550mm  
Min height 242mm

Tank capacity  
80L/21US gal

40~80°C



Oil Temperature  
Range



Draining Hose(dia.@length)  
Φ25×2m



Suction Hose(dia.@length)  
Φ19×2m








**HG-32026**  
 MOBILE OIL  
 DISPENSER  
 Manual oil dispensers.

#### HG-32026 PARAMETERS

> Tank capacity	30L/8Gallon
> Max.working pressure	MANUAL
> Dispenser Hose	ø12mm*8mm
> Dispenser Gun Length	130mm
> Air inlet connection	
> Weight	13.5kg
> CBM:	0.12m³
> Dimension(mm):	370*355*920


**HG-33026**  
 MOBILE OIL  
 DISPENSER

Pneumatic oil dispensers are suitable for filling or topping-up oil. Filled with oil (to 4/5 capacity) and pressurized with air at 6 bar, they work autonomously anywhere and do not require continuous connection to the compressed-air line.



#### HG-33026 PARAMETERS

> Tank capacity	30L/8Gallon
> Max.working pressure	6bar/87Psi
> Dispenser Hose	ø12mm*8mm
> Dispenser Gun Length	130mm
> Air inlet connection	G 1/4" fitting or Quick Plug
> Weight	13.5kg
> CBM:	0.12m³
> Dimension(mm):	370*355*920




**HG-33026A**  
 MOBILE OIL  
 DISPENSER

Pneumatic oil dispensers are suitable for filling or topping-up oil. Filled with oil (to 4/5 capacity) and pressurized with air at 6 bar, they work autonomously anywhere and do not require continuous connection to the compressed-air line.

#### HG-33026A PARAMETERS

> Tank capacity	30L/8Gallon
> Max.working pressure	6bar/87Psi
> Dispenser Hose	ø12mm*8mm
> Dispenser Gun Length	130mm
> Air inlet connection	G 1/4" fitting or Quick Plug
> Weight	15kg
> CBM:	0.12m³
> Dimension(mm):	370*355*920

#### HG-33026L PARAMETERS

> Tank capacity	30L/8Gallon
> Max.working pressure	6bar/87Psi
> Dispenser Hose	1/2"x4m
> Digital meter control valve	70961023
> Air inlet connection	G 1/4" fitting or Quick Plug
> Weight	15kg
> CBM:	0.12m³
> Dimension(mm):	370*355*920/330*140*125



**HG-33026L**



**HG-33026L/A**

#### HG-33026L/A PARAMETERS

> Tank capacity	30L/8Gallon
> Max.working pressure	6bar/87Psi
> Dispenser Hose	1/2"x4m
> Digital meter control valve	70989023
> Air inlet connection	G 1/4" fitting or Quick Plug
> Weight	15kg
> CBM:	0.12m³
> Dimension(mm):	370*355*920/440*140*160





**HG-53026**  
MOBILE OIL DISPENSER  
(STAINLESS STEEL)

Pneumatic oil dispensers are suitable for filling or topping-up oil (filled with oil to 45 capacity) and pressurized with air at 6 bar they work automatically everywhere and do not require continuous connection to the compressed-air line.

**HG-53026 PARAMETERS**

Tank capacity	50L (13.5 gallon)
Max. working pressure	6bar (87PSI)
Dispenser Hose	Ø 12mm x 8mm
Dispenser Gun Length	130mm
Air inlet connection	1/4" NPT or G1/2" Pipe
Weight	14kg
SRM	0.12m³
Dimensions(mm)	370 x 355 x 920

**HG-68012 PARAMETERS**

Tank capacity	10L (2.6 gallon)
Output Pressure(bar)	6bar
Disp. Hose (mm)	12x8
Dispenser Gun	130
Pump Ratio	Manual 40:1
Delivery Speed	Depends on thickness of grease
Dimensions(mm)	370x350x920
N.W. & Weight	12kg



**HG-68012**  
MANUAL GREASE  
DISPENSER



**HG-53026A**  
MOBILE OIL DISPENSER  
(STAINLESS STEEL)

Pneumatic oil dispensers are suitable for filling or topping-up oil (filled with oil to 45 capacity) and pressurized with air at 6 bar they work automatically everywhere and do not require continuous connection to the compressed-air line.

**HG-53026A PARAMETERS**

Tank capacity	80L (21 gallon)
Max. working pressure	6bar (87PSI)
Dispenser Hose	Ø 12mm x 8mm
Dispenser Gun Length	130mm
Air inlet connection	1/4" NPT or G1/2" Pipe
Weight	15kg
SRM	0.12m³
Dimensions(mm)	370 x 355 x 920

**HG-68213 PARAMETERS**

Tank capacity	10L (2.6 gallon)
Output Pressure(bar)	6bar (87PSI)
Disp. Hose (mm)	12x8
Dispenser Gun	130
Pump Ratio	50:1
Delivery Speed	400-1000g/min (15-1.2L/min)
Dimensions(mm)	370x350x920
N.W. & Weight	12/14



**HG-68213**  
PNEUMATIC GREASE  
DISPENSER



Double acting air operated pumps for transferring lubricants and other non-corrosive fluids. Pump includes height-adjustable 2" BSP bung adaptor. Typically used in workshops, service stations, fleet maintenance in mining, agriculture, armed forces, construction, trains, ect.

03

# AIR OPERATED OIL & GREASE PUMPS



AIR OPERATED  
OIL & GREASE PUMPS

# HAND PUMP

For fast transfer of water, diesel, bio diesel, kerosene, oil, weak acid, and weak alkali.

1. With viton seals.
2. Pump manufactured from polypropylene. 201SS rod.
3. Spout made of PP, and adjustable handle, made of ABS.



HG-1026



HG-1027

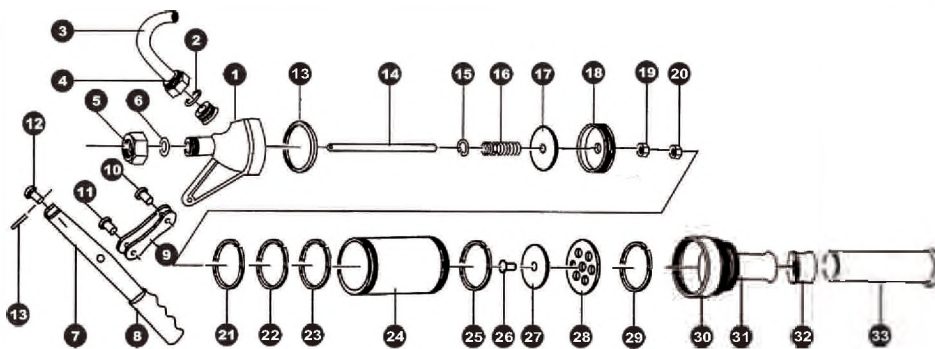


HG-1028

Item	Piston Part	Pump body	Suction tube
HG-1026	Brass & Metal, wearproof.	Seamed steel tube	Seamed steel tube
HG-1027	Brass & Metal, wearproof.	Seamless steel tube	Seamless steel tube
HG-1028	Brass & Metal, wearproof.	Seamless steel tube	Seamless steel tube

Item	Packing:	Dimension	N.W/G.W
HG-1026	1PC/INNER BOX, 10PCS/CTN	470*290*325MM	22/20KG
HG-1027	1PC/INNER BOX, 10PCS/CTN	475*310*365MM	19.1KG/18KG
HG-1028	1PC/INNER BOX, 10PCS/CTN	475*310*365MM	19.1KG/18KG

Item	Pump body Surface Treatment	Guarantee Period
HG-1026	Chromium Plating	12 months
HG-1027	Baked Paint	12 months
HG-1028	Chromium Plating	12 months



PART NO.	DESCRIPTION	QUANTITY	PART NO.	DESCRIPTION	QUANTITY	PART NO.	DESCRIPTION	QUANTITY
1	pump head	1	12	pump head	1	23	pump head	1
2	Spout seal	1	13	Spout seal	1	24	Spout seal	1
3	Spout	1	14	Spout	1	25	Spout	1
4	Coupling nut	1	15	Coupling nut	1	26	Coupling nut	1
5	Piston rod nut	1	16	Piston rod nut	1	27	Piston rod nut	1
6	Piston rod nut	1	17	Piston rod nut	1	28	Piston rod nut	1
7	Handle	1	18	Handle	1	29	Handle	1
8	Coated vinyl grip	1	19	Coated vinyl grip	1	30	Coated vinyl grip	1
9	Handle lever	2	20	Handle lever	2	31	Handle lever	1
10	Level rivet	1	21	Level rivet	1	32	Level rivet	1
11	Level rivet	1	22	Level rivet	1	33	Level rivet	1



Three assembled positions for different fluids:

1. Applicable for lubrications under #35.
2. Applicable for water, alcohol and low viscosity lubrications.
3. Applicable for flammable liquids, e.g. diesel, kerosene, etc.

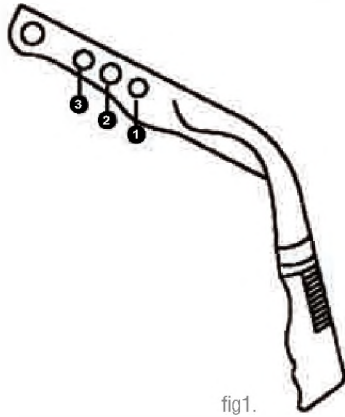


fig1.

Note: If the fluid leaks from around part No.9(piston rod), tighten part No.4(piston rod nut).  
If part No.9 can not freely move, adjust part No.4 to loose.

## HAND PUMP

For fast transfer of water, diesel, bio diesel, kerosene, oil, weak acid, and weak alkali.

1. With viton seals.
2. Pump manufactured from polypropylene. 201SS rod.
3. Spout made of PP, and adjustable handle, made of ABS.

Product Data:

Flow rate: 9-10L/2.4-2.6Gallon per 28 strokes at #2 position, see fig1.

Telescopic suction tube fits from 60-220L/15-58Gallon drums.

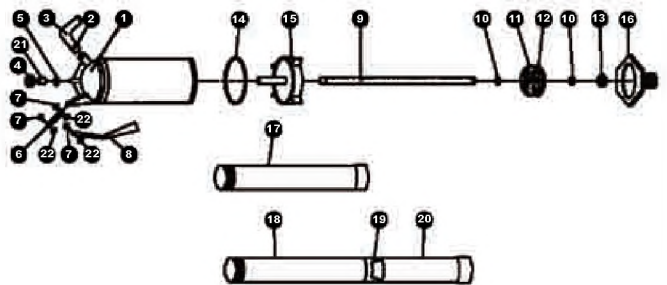
Weight: 0.8kg/1.76LB.

N.W.G.W:6/8KG

Dimension:38.5X32X28.5CM



HG-1029



PART NO.	DESCRIPTION	QUANTITY	PART NO.	DESCRIPTION	QUANTITY	PART NO.	DESCRIPTION	QUANTITY
1	Pump body	1	8	Handle	1	16	Base	1
2	Coupling nut	1	9	Piston rod	1	17	Tube	1
3	Spout	1	10	Valve plate	2	18	Upper telescopic tube	1
4	Piston rod nut	1	11	Valve base	1	19	Telescopic tube seal	1
5	Piston rod seal	2	13	Valve nut	2	20	Bottom telescopic tube	1
6	Handle lever	1	14	Foot valve seal	1	21	Washer	1
7	Screw	3	15	Base plate	1	22	Nut	3

Double acting air operated pumps for transferring lubricants and other non-corrosive fluids. Pump includes height-adjustable 2" BSP bung adaptor. Typically used in workshops, service stations, fleet maintenance in mining, agriculture, armed forces, construction, trains, ect.



2" BSP BUNG ADAPTOR



**OIL PUMP PRESSURE RATE:1:1**

Suction tube diameter 49 mm



**OIL PUMP PRESSURE RATE 1:1**

> Operating pressure	2-8bar
> Max. fluid pressure	8 bar
> Maximum flow rate (low rate)	45 L/min
> Max flow rate with 40° hose and nozzle	17 L/min
> Suction tube diameter	49mm
> Connections	Air inlet quick plug
>	Oil outlet 1/2" BSP

Item	Suction tube length	Weight
70011270	270mm 10.6'	6kg
70011240	140mm 29"	7kg
70011249	340mm 33"	7kg

**MULTI-PURPOSE 2" BSP BUNG ADAPTOR**

Easy to clamp different diameter pump tube with universal tube sleeve.

Item	Tube diameter	Application range
70011000	30mm	0-1'
70011004	34mm	0-2'
70011049	49mm	1-1'



71011270/71031270/71051270

**72011270 1:1 OIL PUMP WALL MOUNTING UNIT**

**72011270 1:1 OIL PUMP WALL MOUNTING UNIT**

Standard model composed of 1:1 oil pump, suction hose and mounting bracket, digital oil meter and oil connection hose.

**INCLUDES**

70011270	1:1 oil pump, 270mm suction tube
70981023	Digital oil meter control valve
70915270	Wall bracket
70915200	2m oil Suction hose
70781204	1/2" x 4mm oil connection hose

### OIL PUMP PRESSURE RATE: 3:1

Operating air pressure	3-8bar
Max head pressure	24 DM
Max continuous duty flow rate	27 L/min
Max flow rate with full hose and nozzle	18 L/min
Suction tube diameter	34mm
Construction	Air side: quick plug Oil side: 1/2" BSP

Item	Suction tube length	Weight
70031270	270mm / 10.6"	5Kg
70031740	740mm / 29"	7Kg
70031940	940mm / 37"	7Kg

### OIL PUMP PRESSURE RATE 5:1

Operating air pressure	3-8bar
Max head pressure	40 bar
Max continuous duty flow rate	17 L/min
Max flow rate with full hose and nozzle	14 L/min
Suction tube diameter	30mm
Construction	Air side: quick plug Oil side: 1/2" BSP

Item	Suction tube length	Weight
70051270	270mm / 10.6"	5kg
70051740	740mm / 29"	7kg
70051940	940mm / 37"	7kg

Pneumatic pump can transmit various types of lubricating oil, and can be widely used in industry, automotive service, etc. Each pump includes the height-adjustable 2" BSP hung adaptor.



**OIL PUMP PRESSURE RATE: 3:1**  
Suction Tube Diameter: 34 mm

**OIL PUMP PRESSURE RATE: 5:1**  
Suction Tube Diameter: 30 mm



## MOBILE OIL PUMP UNIT

Mobile unit is suitable for dispensing oil for mobile application. Drum trolley ensures high mobility and efficiency. Easy to move the drum in the workshop.

### MOBILE UNIT FOR 20 TO 60 L DRUM

Standard model composed of 3:1 or 5:1 oil pump, trolley, digital oil meter with nozzle and 4m connection hose

#### 71031740 3:1 Mobile Oil Pump Unit

##### INCLUDES

70031740	3:1 oil pump, 740mm suction tube
70961023	Digital oil meter control valve with flexible hose, auto tip
80001050	20-60kg drum trolley
70781204	1/2" x4m oil connection hose

#### 71051740 5:1 Mobile Oil Pump Unit

##### INCLUDES

70051740	5:1 oil pump, 740mm suction tube
70961023	Digital oil meter control valve with flexible hose, auto tip
80001050	20-60kg drum trolley
70781204	1/2" x4m oil connection hose



MOBILE UNIT FOR 20 TO 60 L DRUM

### MOBILE UNIT FOR 180 TO 200 L DRUM

Standard model composed of 3:1 or 5:1 oil pump, trolley, digital oil meter with nozzle and 4m connection hose

#### 71031940 3:1 Mobile Oil Pump Unit

##### INCLUDES

70031940	3:1 oil pump, 940mm suction tube
70961023	Digital oil meter control valve with flexible hose, auto tip
80001200	180-200kg drum trolley
70781204	1/2" x4m oil connection hose

#### 71051940 5:1 Mobile Oil Pump Unit

##### INCLUDES

70051940	5:1 oil pump, 940mm suction tube
70961023	Digital oil meter control valve with flexible hose, auto tip
80001200	180-200kg drum trolley
70781204	1/2" x4m oil connection hose



MOBILE UNIT FOR 180 TO 200 L DRUM

# MOBILE OIL PUMP UNIT

Mobile unit is suitable for dispensing oil for mobile application. Drum trolley ensures high mobility and efficiency. Easy to move the drum in the workshop.



**MOBILE UNIT FOR 180 TO 200 L DRUM WITH HOSE REEL**

## **MOBILE UNIT FOR 180 TO 200 L DRUM**

Standard model composed of 3:1 or 5:1 oil pump, trolley, digital oil meter with nozzle, 4m connection hose and industrial oil hose reel

### **71031948 3:1 Mobile Oil Pump Unit**

#### **INCLUDES**

70031940	3:1 oil pump, 940mm suction tube
70961023	Digital oil meter control valve with flexible hose, auto tip
80001208	180–200kg drum trolley
70781204	1/2" x4m oil connection hose
IRN2104	Industrial oil hose reel 1/2"x10m

### **71051948 5:1 Mobile Oil Pump Unit**

#### **INCLUDES**

70051940	5:1 oil pump, 940mm suction tube
70961023	Digital oil meter control valve with flexible hose, auto tip
80001208	180–200kg drum trolley
70781204	1/2" x4m oil connection hose
IRN2104	Industrial oil hose reel 1/2"x10m

# 50:1 AIR OPERATED GREASE PUMPS

Double acting air operated pumps for high pressure greasing. Recommended use in mobile units and gingle point dispensing units when the hose reel is connected directly to the pump outlet. Typically used in workshops, service stations, fleet maintenance in mining, agriculture, armed forces, construction, trains, ect.



Suction Tube  
Diameter 32 mm



DRUM COVER



FOLLOWER PLATE



GREASE CONTROL VALVE



GREASE HOSE

## GREASE PUMP PRESSURE RATE: 50:1

INCLUDES	
Operating air pressure	3-8 bar
Max.fluid pressure	400 bar
Max.continuous duty flow rate	800 g/min
Max flow rate with 4m hose and nozzle	600 g/min
Suction tube diameter	32 mm
Connections :	Air inlet quick plug
	Oil outlet 1/4" BSP

Item	Suction tube length	Weight
60501480	480mm / 19"	5Kg
60501740	740mm / 29"	6Kg
60501940	940mm / 37"	7Kg

## DRUM COVER

Item	Diameter	Drum Size Applied	Drum Application
60910310	310mm	270-300mm	16-30kg
60910385	385mm	335-360mm	50-60kg
60910600	600mm	540-580mm	180-220kg

## FOLLOWER PLATE

Item	Diameter	Drum Size Applied	Drum Application
60920310	310mm	270-300mm	16-30kg
60920370	370mm	335-360mm	50-60kg
60920585	585mm	540-580mm	180-220kg

## GREASE CONTROL VALVE

Item	Des	Size
60906121	Grease control Valve	1/4"BSPT/NPT inlet
60906302	Z-swivel	1/4"BSPT/NPT inlet/outlet
60906000	Grease control Valve with Z-swivel connector	

## GREASE HOSE

1/4" grease hose, SAE100R2AT, W.P.: 346 bar

Hose end:	1/4" male BSPT/NPT fitting
	1/4" rotate female BSP/NPS fitting

Item	Length
60781402	2m
60781404	4m
60781408	8m
60781415	15m



## MOBILE GREASE PUMP UNIT

Mobile unit is suitable for dispensing grease for mobile application. Drum trolley ensures high mobility and efficiency. Easy to move the drum in the workshop.



61501480 50:1 Mobile Grease Pump Unit

### GREASE PUMP PRESSURE RATE: 50:1

Standard model composed of 50:1 grease pump, trolley, grease gun with Z-swivel and 2m connection hose

#### 61501480 50:1 Mobile Grease Pump Unit

##### INCLUDES

60501480	50:1 grease pump, 480mm suction tube
60910385	Drum cover, 385mm
60920370	Follower plate, 370mm
60906000	Grease gun with Z-swivel
80001050	20-60kg drum trolley
60781404	1/4"x4m grease connection hose

### MOBILE UNIT FOR 200 KGS DRUM

Standard model composed of 50:1 grease pump, trolley, grease gun with Z-swivel and 2m connection hose

#### 61501940 50: 1 Mobile Grease Pump Unit

##### INCLUDES

60501940	50:1 grease pump, 940mm suction tube
60910600	Drum cover, 600mm
60920585	Follower plate, 585mm
60906000	Grease gun with Z-swivel
80001200	180-200kg drum trolley
60781404	1/4"x4m grease connection hose



61501940 50: 1 Mobile Grease Pump Unit

## MOBILE GREASE PUMP UNIT

Mobile unit is suitable for dispensing grease for mobile application. Drum trolley ensures high mobility and efficiency. Easy to move the drum in the workshop.



61501948 50: 1 Mobile Grease Pump Unit

### MOBILE UNIT FOR 200 KGS DRUM WITH HOSE REEL

Standard model composed of 50:1 grease pump, trolley, grease gun with z-swivel, 2m connection hose and industrial oil hose reel

#### 61501948 50:1 Mobile Grease Pump Unit

INCLUDES	
60501940	50:1 grease pump, 940mm suction tube
60910600	Drum cover, 600mm
60920585	Follow plate, 585mm
60906000	Grease gun with Z-swivel
80001208	180-200kg drum trolley
60781402	1/4"x2m grease connection hose
IRN3102	Industrial grease hose reel 1/4"x10m

## STEEL DRUM TROLLEY

Heavy Duty Trolley for different size drum. Include an adjustable chain for securing the drum and a bracket mounted on the handle for fixing an air operated pump. Easy to move the drum in the workshop.

### ITEM: 80001200

Drum application: 180-220kg  
Galvanized steel frame,  
with 5" fixed wheel and 3" caster with brake.  
A drum clamping device  
adjustable side support for hooking the gun  
and hose or other accessories.

### ITEM: 80001200



### ITEM: 80001050

Drum application: 20-60kg  
Galvanized steel frame,  
with 4" wheel and 3" caster

### ITEM: 80001050



### ITEM: 80001208

Hose reel can be mounted with optional bracket.

### ITEM: 80001208





The oil meter control valve is able to cater for even the most discerning market requirements. The possibility of dispensing in pre-selection make it truly unique. Once the pre-selected quantity has been reached, the nozzle will close the valve automatically and stop dispensing.

The oval-gear meter makes it possible to achieve high count precision with low flow resistance. The oil meter control valve can be fitted with a nozzle or integrated with different ends to suit specific requirements. The nozzle is fitted a balance valve for reducing triggered pressure.



# PRE- SELECTION DIGITAL METER OIL CONTROL VALVE



PRE-  
SELECTION  
DIGITAL METER  
CONTROL  
VALVE

## DIGITAL METER CONTROL VALVE

The oil meter control valve is able to cater for even the most discerning market requirements. The oval-gear meter makes it possible to achieve high count precision with low flow resistance. The oil meter control valve can be fitted with a nozzle or integrated with different ends to suit specific requirements. The nozzle is fitted a balance valve for reducing triggered pressure.



DIGITAL METER CONTROL VALVE

OIL CONTROL VALVE

### PARAMETERS

> Flow rate	1 to 30L /min
> Precision	± 5%
> Max working pressure	Max 70 bar
> Min working pressure	3bar
> Input with rotating	G1/2" BSP/NPT
> Meter body input/output	G1/2" BSP/NPT
> Path diameter	φ 10
> Power supply	DC 3V

Item	Description	Spout	Tip
70961023	With digital meter	Flexible hose	Automatic

### PARAMETERS

> Flow rate	1 to 30L /min
> Max working pressure	Max 70 bar
> Min working pressure	3bar
> Input with rotating	G1/2" BSP/NPT
> Meter body input/output	G1/2" BSP/NPT
> Path diameter	φ 10

Item	Description	Spout	Tip
70960023	With digital meter	Flexible hose	Automatic



## DIGITAL METER CONTROL VALVE

The oil meter control valve is able to cater for even the most discerning market requirements. The oval-gear meter makes it possible to achieve high count precision with low flow resistance. The oil meter control valve can be fitted with a nozzle or integrated with different ends to suit specific requirements. The nozzle is fitted a balance valve for reducing triggered pressure.

### PARAMETERS

> Flow rate	1 to 30L /min
> Precision	+ 5%
> Repetitiveness	0.2%
> Loss of pressure	±
> Max working pressure	Max 70 bar
> Min working pressure	3bar
> Input with rotating	1/2"BSP/NPT
> Meter body input/output	1/2"BSP/NPT
> Path diameter	∅ 10
> Power supply	DC 3V

Item	Description	Spout	Tip
80981023	With digital meter	Flexible hose	Automatic

### OIL METER ACCESSORIES

	70900023 Flexible hose with automatic non-drip valve
	70900022 Flexible hose with Semi-automatic non-drip valve
	70900011 Right tube with manual non-drip valve
	70900003 Automatic non-drip valve
	70900002 High flow rate Semi-automatic non-drip valve
	70900001 Low flow Manual non-drip valve

### CONNECTION HOSE

1/2" oil hose, SAE100R1AT  
W.P. 134 bar  
Hose end 1-T male BSP/NPT fitting  
1/4" rotate female BSP/NPS fitting

Hose	Length
70781202	2m
70781204	4m
70781215	15m
70781208	8m



DIGITAL METER CONTROL VALVE

## PRE-SELECTION DIGITAL METER CONTROL VALVE

The oil meter control valve is able to cater for even the most discerning market requirements. The possibility of dispensing in pre-selection make it truly unique. Once the pre-selected quantity has been reached, the nozzle will close the valve automatically and stop dispensing.

The oval-gear meter makes it possible to achieve high count precision with low flow resistance. The oil meter control valve can be fitted with a nozzle or integrated with different ends to suit specific requirements. The nozzle is fitted a balance valve for reducing triggered pressure.



PRE-SELECTION DIGITAL METER CONTROL VALVE

### PRE-SELECTION DIGITAL METER CONTROL VALVE

#### FEATURES

- Electronic card with LCD housed in cover
- 5-digit liquid crystal display
- 4 units and battery indicator
- Dispense and intake in L, GAL, PT and QT
- Battery power supply is 6V

#### PARAMETERS

Pre-selectable quantity	U.L. min. 99.9L max
Flow rate	1 to 30L /min
Precision	± 5%
Repeatableness	0.2%
Max working pressure	Max 70 bar
Min working pressure	3bar
Input with rotating	G1/2" BSP/NPT
Meter body input/output	G1/2" BSP/NPT
Path diameter	∅ 12
Power supply	DC 6V

Item	Description	Spout	Tip
70989023	with preset digital meter	Flexible hose	Automatic
70989011	with preset digital meter	Rigid tube	Manual



PRESET QUANTITY NOZZLES



LARGE FILTER



BATTERY CASE



PRESSURE METER FOR CHECKING THE FUNCTION

## DIGITAL METER CONTROL VALVE

The oil meter control valve is able to cater for even the most discerning market requirements. The oval-gear meter makes it possible to achieve high count precision with low flow resistance. The oil meter control valve can be fitted with a nozzle or integrated with different ends to suit specific requirements. The nozzle is fitted a balance valve for reducing triggered pressure.

### DIGITAL METER CONTROL VALVE

#### PARAMETERS

> Flow rate	1 to 30L /min
> Precision	± 5%
> Repetitiveness	0.2%
> Max working pressure	Max 70 bar
> Min working pressure	3bar
> Input with rotating	G1/2" BSP/NPT
> Meter body input/output	G1/2" BSP/NPT
> Path diameter	Ø 12
> Power supply	DC 6V

Item	Description	Spout	Tip
70981123	With digital meter	Flexible hose	Automatic
70981011	With digital meter	Rigid tube	Manual

### OIL CONTROL VALVE

#### PARAMETERS

> Flow rate	1 to 30L /min
> Max working pressure	Max 70 bar
> Input with rotating	G1/2" BSP/NPT
> Meter body input/output	G1/2" BSP/NPT
> Min working pressure	3bar
> Path diameter	Ø 12

Item	Description	Spout	Tip
70980023	With digital meter	Flexible hose	Automatic
70980011	With digital meter	Rigid tube	Manual



DIGITAL METER CONTROL VALVE

OIL CONTROL VALVE

Free dismantle,air-operated,safe,easy,simple operation  
cleaning,changing oil/fluid from car systems(such as  
transmission system,engine system,fuel system,radiator  
system,power steering system,brake fluid system)

05



INDUSTRIAL  
HOSE REEL

# INDUSTRIAL HOSE REEL



# INDUSTRIAL HOSE REEL

Industrial hose reel is an ideal solution for workshops that dogged by the problem of trailing wires. Suitable for in-door and out-door work places. Operators can work in a clean and tidy place. Optional wall, ceiling or floor mounted. Heavy-duty steel construction with long life in industrial and automotive applications.



STEEL SPRING DRIVEN HOSE REEL DOUBLE ARM

## STEEL SPRING DRIVEN HOSE REEL DOUBLE ARM

Carbon steel drum, arm and bracket in corrosion resistant powder coating.

Item	Inlet/outlet (Inch)	Max pressure (Psi/bar)
IRN1103	3/8"	300/20
IRN1153	3/8"	300/20
IRN2104	1/2"	2000/138
IRN2154	1/2"	2000/138
IRN3102	1/4"	5000/345
IRN3152	1/4"	5000/345

Item	Hose capacity		Application
	I.D.(inch)	Length(ft/m)	
IRN1103	3/8"	33/10	Air ,Water reel
IRN1153	3/8"	50/15	Air ,Water reel
IRN2104	1/2"	33/10	Oil reel
IRN2154	1/2"	50/15	Oil reel
IRN3102	1/4"	33/10	Grease reel
IRN3152	1/4"	50/15	Grease reel



## ENCLOSED STEEL SPRING DRIVEN HOSE REEL

Large case designed for longer hose, carbon steel drum, arm and bracket in corrosion resistant powder coating.

Item	Inlet/outlet (Inch)	Max pressure (Psi/bar)
IRE1103	3/8"	300/20
IRE1153	3/8"	300/20
IRE2104	1/2"	2000/138
IRE2154	1/2"	2000/138
IRE3102	1/4"	5000/345
IRE3152	1/4"	5000/345

Item	Hose capacity		Application
	I.D.(inch)	Length(ft/m)	
IRE1103	3/8"	33/10	Air ,Water reel
IRE1153	3/8"	50/15	Air ,Water reel
IRE2104	1/2"	33/10	Oil reel
IRE2154	1/2"	50/15	Oil reel
IRE3102	1/4"	33/10	Grease reel
IRE3152	1/4"	50/15	Grease reel



BR0105 Swivel base for IRE



PL-HR610/PL-HR808



PL-HR615/PL-HR815



It can be easily attached to any flat surface and easy to install.



It's made of rubber and can adjust the length of hose.



It's can be used in extreme environments, corrosion-resistant.



High quality PU braided Hose, corrosion-resistant, durable



High quality steel made coupling



PL-HR508



PL-HR612/PL-HR810



PL-HR620/PL-HR820



PL-HR810W

Item	Inlet/outlet (Inch)	Hose material	Max pressure (Psi/bar)	Hose capacity I.D(inch)	Hose capacity Length(ft/m)	Packing Dimension (CM)	Carton Dimension (CM)	Carton Pack	Weight N.W/G.W (KG)	Application
PL-HR610	1/4"	PU braided hose	218/15	1/4"	33/10	29*28*15	63*46*31	6	2.8/3.5	Air
PL-HR808	3/8"	PU braided hose	218/15	3/8"	27/8	29*28*15	63*46*31	6	3.0/3.5	Air
PL-HR615	1/4"	PU braided hose	218/15	1/4"	50/15	31*18*31.5	80*50*33	6	3.0/3.5	Air
PL-HR815	3/8"	PU braided hose	218/15	3/8"	50/15	31*18*31.5	80*50*33	6	3.2/3.7	Air
PL-HR620	1/4"	PU braided hose	218/15	1/4"	67/20	40*21*42	48*43*49	6	6.0/6.5	Air
PL-HR820	3/8"	PU braided hose	218/15	3/8"	67/20	40*21*42	48*43*49	6	6.5/7.0	Air
PL-HR612	1/4"	PU braided hose	218/15	1/4"	40/12	37*27*16.5	56*52.5*38.5	6	3.1/3.6	Air
PL-HR810	3/8"	PU braided hose	218/15	3/8"	33/10	37*27*16.5	56*52.5*38.5	6	3.1/3.6	Air
PL-HR810W	3/8"	PU braided hose	218/15	3/8"	33/10	37*27*16.5	56*52.5*38.5	6	3.1/3.6	Water
PL-HR508	1/4"	PU braided hose	218/15	1/4"	27/8	25*10*27	63.5*27*52	12	1.5/1.7	Air



High quality steel made coupling



It can be easily attached to any flat surface and easy to install



It's can be used in extreme environments, corrosion-resistant.



It's made of rubber and can adjust the length of hose.



High quality PU braided Hose, corrosion-resistant, durable.



High quality steel made coupling



It can be easily attached to any flat surface and easy to install



It's can be used in extreme environments, corrosion-resistant.



It's made of rubber and can adjust the length of hose.



High quality PU braided Hose, corrosion-resistant, durable.

Item	Inlet/outlet (Inch)	Hose material	Max pressure (Psi/bar)	Hose capacity I.D.(inch)	Hose capacity Length(ft/m)	Packing Dimension (CM)	Carton Dimension (CM)	Carton Pack	Weight N.W/G.W (KG)	Application
PL-HD610	1/4"	PU braided hose	218/15	1/4"	33/10	37*29.5*17	76*53.5*31	6	4.0/5.0	Air
PL-HD810	3/8"	PU braided hose	218/15	3/8"	33/10	37*29.5*17	76*53.5*31	6	4.0/5.0	Air
PL-HD810W	3/8"	PU braided hose	218/15	3/8"	33/10	37*29.5*17	76*53.5*31	6	4.0/5.0	Water
PL-HG612	1/4"	PU braided hose	218/15	1/4"	40/12	37*29.5*17	76*53.5*31	6	4.0/5.0	Air
PL-HG810	3/8"	PU braided hose	218/15	3/8"	33/10	37*29.5*17	76*53.5*31	6	4.0/5.0	Air
PL-HG810W	3/8"	PU braided hose	218/15	3/8"	33/10	37*29.5*17	76*53.5*31	6	4.0/5.0	Water





Item	Specification	input wire size	Output wire size	Working vpltage	Peak load (W)	Packing Dimension (CM)	Carton Dimension (CM)	Carton Pack	Weight N.W/G.W (KG)	Application
PL-GD213	H05VV-F	2*1.55mm <sup>2</sup> *1m(L)	2*1.5mm <sup>2</sup> *13m(L)	AC230V50/60HZ	1500-2000	37*29.5*17	76*53.5*31	6	4.0/5.0	Electricity
PL-GD215	H05VV-F	2*1.55mm <sup>2</sup> *1m(L)	2*1.5mm <sup>2</sup> *15m(L)	AC230V50/60HZ	1500-2000	37*29.5*17	76*53.5*31	6	4.0/5.0	Electricity
PL-GD213A	H05VV-F	2*0.75mm <sup>2</sup> *1m(L)	2*0.75mm <sup>2</sup> *13m(L)	AC230V50/60HZ	1500-2000	37*29.5*17	76*53.5*31	6	4.0/5.0	Electricity
PL-GD215A	H05VV-F	2*0.75mm <sup>2</sup> *1m(L)	2*0.75mm <sup>2</sup> *15m(L)	AC230V50/60HZ	1500-2000	37*29.5*17	76*53.5*31	6	4.0/5.0	Electricity



**PL-GD210**



**PL-GD210A**

Item	Specification	input wire size	Output wire size	Working voltage	Peak load (W)	Packing Dimension (CM)	Carton Dimension (CM)	Carton Pack	Weight N.W/G.W (KG)	Application
PL-GD210	H05VV-F	2*1.5mm <sup>2</sup> *1m(L)	2*1.5mm <sup>2</sup> *10m(L)	AC230V50/60HZ	1500-2000	37*29.5*17	76*53.5*31	6	4.0/5.0	Electricity
PL-GD210A	H05VV-F	2*1.5mm <sup>2</sup> *1m(L)	2*1.5mm <sup>2</sup> *10m(L)	AC230V50/60HZ	1500-2000	37*29.5*17	76*53.5*31	6	4.0/5.0	Electricity



**PL-GDT213A**

(Without bulb)

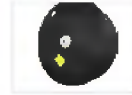


**PL-GDT213**

Item	Specification	Input line size	Output line size	Working voltage	Peak load (W)	Packing Dimension (CM)	Carton Dimension (CM)	Carton Pack	Weight N.W/G.W (KG)	Application
PL-GDT213	H05VV-F	2*1.5mm <sup>2</sup> *1m(L)	2*1.5mm <sup>2</sup> *13m(L)	AC230V50/60HZ	1500-2000	37*27*16.5	56*52.5*38.5	6	3.7/4.1	Electricity
PL-GDT213A	H05VV-F	2*0.75mm <sup>2</sup> *1m(L)	2*0.75mm <sup>2</sup> *15m(L)	AC230V50/60HZ	60	37*27*16.5	56*52.5*38.5	6	3.8/4.0	Electricity



Reinforced steel:the steel-stamped guide arm is reinforced to reduce bending due to angular pull.



Corrosion-resistant:steel components are individually powder coated to virtually eliminate corrosion.



Long life drive spring: declutching arbor virtually eliminates possibility of spring damage due to reverse winding of reel spool.



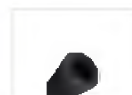
Improved connection:the elongated brass connector and proprietary adhesion process provide a better Crimp to the hose.



Robust Latch:combined with special spring assures maximum service life.



Structural strength:welded heavy gauge steel frame includes dramatically flanged edges and stiffening ribs for lighter weight, yet stronger components for ease of handling and installation.



High quality rubber hose

Item	Inlet/outlet (Inch)	Hose material	Max pressure (Psi/bar)	Hose capacity I.D.(inch)	Hose capacity Length(ft/m)	Packing Dimension (CM)	Carton Dimension (CM)	Carton Pack	Weight N.W/G.W (KG)	Application
IRB1153	3/8"	Rubber	300/20	3/8"	50/15	47.5*20*47	47.5*20*47	1	12.5/13.5	Water, Air
IRB1104	1/2"	Rubber	300/20	1/2"	33/10	47.5*20*47	47.5*20*47	1	12.5/13.5	Water, Air
IRB1202	1/4"	Rubber	300/20	1/4"	67/20	47.5*20*47	47.5*20*47	1	14.5*15.5	Water, Air
IRB3102	1/4"	Rubber	6000/400	1/4"	33/10	47.5*20*47	47.5*20*47	1	12.5/13.5	Grease reel
IRB3152	1/4"	Rubber	6000/400	1/4"	50/15	47.5*20*47	47.5*20*47	1	14.5*15.5	Grease reel
IRB2122	1/4"	Rubber	3000/200	1/4"	40/12	47.5*20*47	47.5*20*47	1	13.5/14.5	Oil
IRB2152	1/4"	Rubber	3000/200	1/4"	50/15	47.5*20*47	47.5*20*47	1	14.5*15.5	Oil
IRB2103	3/8"	Rubber	3000/200	3/8"	33/10	47.5*20*47	47.5*20*47	1	16/18	Oil
IRB2123	3/8"	Rubber	3000/200	3/8"	40/12	47.5*20*47	47.5*20*47	1	18/20	Oil
IRB2153	3/8"	Rubber	3000/200	3/8"	50/15	47.5*20*47	47.5*20*47	1	20/22	Oil



High quality rubber hose



Reinforced steel: the steel-stamped guide arm is reinforced to reduce bending due to angular pull.



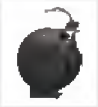
Corrosion-resistant: steel components are individually powder coated to virtually eliminate corrosion.



Improved connection: the elongated brass connector and proprietary adhesion process provide a better Crimp to the hose.



Long life drive spring: declutching arbor virtually eliminates possibility of spring damage due to reverse winding of reel spool.



Structural Strength: Welded heavy gauge steel frame includes dramatically flanged edges and stiffening ribs for lighter weight, yet stronger components for ease of handling and installation.



High quality rubber hose



Reinforced steel: the steel-stamped guide arm is reinforced to reduce bending due to angular pull.



Corrosion-resistant: steel components are individually powder coated to virtually eliminate corrosion.



Long life drive spring: declutching arbor virtually eliminates possibility of spring damage due to reverse winding of reel spool.



Structural Strength: Welded heavy gauge steel frame includes dramatically flanged edges and stiffening ribs for lighter weight, yet stronger components for ease of handling and installation.



Item	Inlet/outlet (Inch)	Hose material	Max pressure (Psi/bar)	Hose capacity I.D(inch)	Hose capacity Length(ft/m)	Packing Dimension (CM)	Carton Dimension (CM)	Carton Pack	Weight N.W/G.W (KG)	Application
IRT1112	1/4"	Rubber	300/21	1/4"	35/11	35*15*38	35*15*38	1	7.2/8	Water, Air
IRT1083	3/8"	Rubber	300/21	3/8"	25/8	35*15*38	35*15*38	1	7.2/8	Water, Air
IRT1113	3/8"	Rubber	300/21	3/8"	35/11	47.3*15.5*51	47.3*15.5*51	1	12/12.6	Water, Air
IRT1153	3/8"	Rubber	300/21	3/8"	50/15	47.3*15.5*51	47.3*15.5*51	1	12.4/13	Water, Air
IRT1114	1/2"	Rubber	300/21	1/2"	35/11	47.3*15.5*51	47.3*15.5*51	1	13/15	Water, Air
IRT1154	1/2"	Rubber	300/21	1/2"	50/15	48*18.5*51	48*18.5*51	1	16/17	Water, Air
IRY1153	3/8"	Rubber	300/21	3/8"	50/15	51.5*22.5*57.5	51.5*22.5*57.5	1	17.2/18.8	Water, Air
IRY1203	3/8"	Rubber	300/21	3/8"	67/20	51.5*22.5*57.5	51.5*22.5*57.5	1	17.83/19.36	Water, Air
IRY1154	1/2"	Rubber	300/21	1/2"	50/15	51.5*22.5*57.5	51.5*22.5*57.5	1	16.93/18.38	Water, Air
IRY2154	1/2"	Rubber	2000/138	1/2"	50/15	51.5*22.5*57.5	51.5*22.5*57.5	1	26.5/27	Water, Air/Oil



## Features

The unit can be combined with optional water, electric, air and lamp outlets accord to different requirement.  
 Tightly sealed for safety protection and increase impermeability  
 ABS high strength plastic protection shell  
 Retractable cords, improve workplace safety by keeping the cords inside the fix pipeline and out of harms way  
 Overheat safety protection  
 Easy installation allow to mount overhead and wall

- Air hose:10m 6.5mm\*10mm 15pa
- Water hose:10m 8mm\*12mm 15pa
- Wire:10m 220V/50HZ 1500-2000W
- LED:10m 1y-220v-50HZ-18W



Item	Number of outlets	Type of outlets	Packing Dimension (CM)	Carton Dimension (CM)	Weight N.W/G.W (KG)
PL-Z-2p	2	Air hose+Lamp	34.1*33.6*37	34.1*33.6*37	13/15
PL-Z-3p	3	Air hose+Lamp+Socket	34.1*33.6*55.6	34.1*33.6*55.6	20/22
PL-Z-4p	4	Air hose+Lamp+Socket+water hose	34.1*33.6*75	34.1*33.6*75	28/30





## Features

The unit can be combined with optional water, electric, air and lamp outlets accord to different requirement.

Tightly sealed for safety protection and increase impermeability

ABS high strength plastic protection shell

Retractable cords, improve workplace safety by keeping the cords inside the fix pipeline and out of harms way

Overheat safety protection

Easy installation allow to mount overhead and wall

- Air hose:10m 6.5mm\*10mm 15pa
- Water hose:10m 8mm\*12mm 15pa
- Wire:10m 220V/50HZ 1500-2000W
- LED:10m 1y-220v-50HZ-18W



Item	Number of outlets	Type of outlets	Packing Dimension (CM)	Carton Dimension (CM)	Weight N.W/G.W (KG)
PL-ZN-2p	2	Air hose+Lamp	34.1*33.6*37	34.1*33.6*37	13/15
PL-ZN-3p	3	Air hose+Lamp+Socket	34.1*33.6*55.6	34.1*33.6*55.6	20/22
PL-ZN-4p	4	Air hose+Lamp+Socket+water hose	34.1*33.6*75	34.1*33.6*75	28/30

# NITROGEN GENERATOR



06





-30~70°C



Operating temperature



## WS SERIES FEATURES: NEW UPGRADED DESIGN

The LED display screen with electronic atomization glass: transparent when power on, and hazy when power off.



## STEEL PROTECTION BRACKET

Offer the complete protection from packing to using

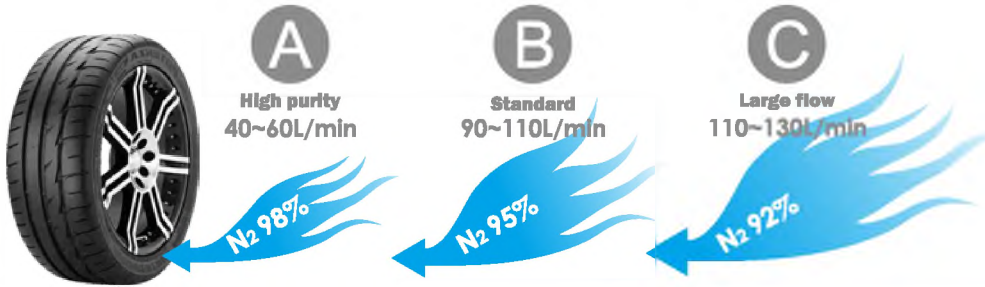


high precision device with double water-oil filter, ensure the service life of molecular sieve



## 1 FEATURE

Three modes for nitrogen generating



## 2 FEATURE

Manual transform valve: transform the N<sub>2</sub> inflation & air inflation mode, convenient and fast.

# Air ↔ N<sub>2</sub>

## 3 FEATURE

Over pressure system (ops).



To make bead and rim fit more closely

## 4 FEATURE

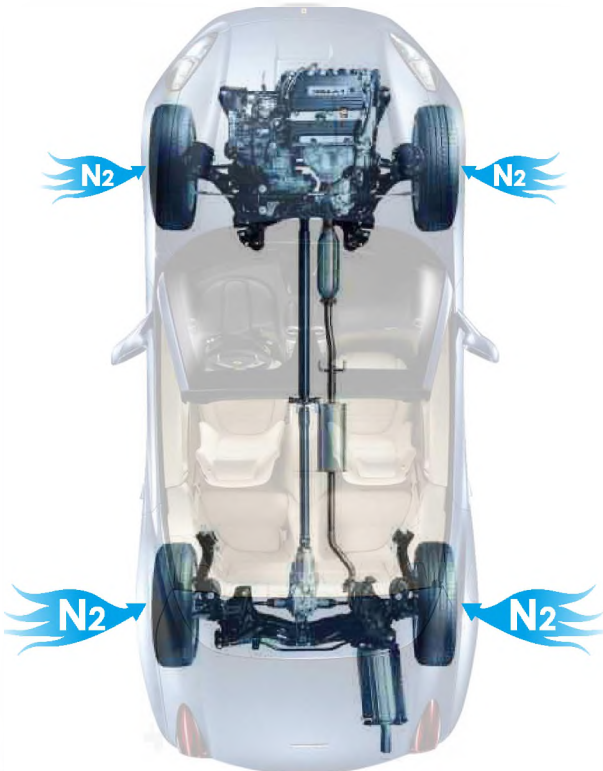
Nitrogen inflation & air purge system (N<sub>2</sub>p) available.



To make nitrogen purity higher inside the tire

## 5 FEATURE

- The front and rear tire pressure can be set respectively.
- Four tires can be inflated simultaneously with four hose reels.



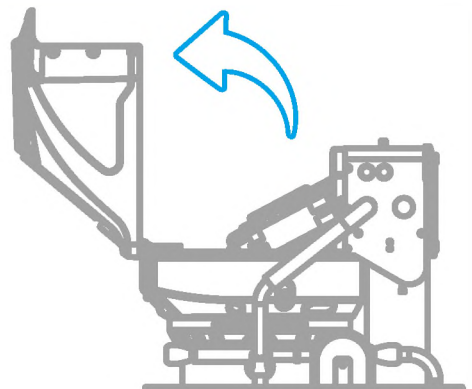
## 6 FEATURE

Dual screen can show different contents for the front and rear tires.



## 7 FEATURE

The head cover can be opened backward to 90° for position, convenient for maintenance.





## WS90 SERIES nitrogen generator



MODEL	WS90-FC	WS90-2FX	WS90-2FC	WS90-2FCX
FUNCTION				
>   Suit for				
>   Front and rear tire pressure difference	/	/	/	/
>   Inflating 4 tires same time				
>   Car dashboard LED screen	✓	✓	✓	✓
>   Vacuum	✓		✓	✓
>   OPS system	✓	✓	✓	✓
>   N2P system		✓		✓
STANDARD PARTS				
>   Air inflator tube	Hose reel X 1	Hose reel X 2	Hose reel X 2	Hose reel X 2
>   High precision filter	1	1	1	1
>   Water/oil filter & separator	1	1	1	1
SPECIFICATIONS				
>   Applicable temperature	-30~70℃	-30~70℃	-30~70℃	-30~70℃
>   Power supply:	AC220V/1PH/50Hz	AC220V/1PH/50Hz	AC220V/1PH/50Hz	AC220V/1PH/50Hz
>   Nitrogen purity:	92%~99%	92%~99%	92%~99%	92%~99%
>   Air inlet pressure:	9~10bar/130~145psi	9~10bar/130~145psi	9~10bar/130~145psi	9~10bar/130~145psi
>   Air compressor required:	5.5~7.5kw,10bar, 1~1.5m³/min	5.5~7.5kw,10bar, 1~1.5m³/min	5.5~7.5kw,10bar, 1~1.5m³/min	5.5~7.5kw,10bar, 1~1.5m³/min
>   Nitrogen output pressure:	1~6bar/15~87psi	1~6bar/15~87psi	1~6bar/15~87psi	1~6bar/15~87psi
>   High purity mode:	98% & 40~60L/min	98% & 40~60L/min	98% & 40~60L/min	98% & 40~60L/min
>   Standard mode:	95% & 90~110L/min	95% & 90~110L/min	95% & 90~110L/min	95% & 90~110L/min
>   Large flow mode:	92% & 110~130L/min	92% & 110~130L/min	92% & 110~130L/min	92% & 110~130L/min
>   N2 tank capacity:	90L	90L	90L	90L



**WS90-2X**

**WS90-2C**

**WS90-2CX**

**WS90-4FX**

**WS90-4X**



/

/

/

/

/



Hose X 2

Hose X 2

Hose X 2

Hose reel X 4

Hose X 4

1

1

1

1

1

1

1

1

1

1

-30~70 °C

-30~70 °C

-30~70 °C

-30~70 °C

-30~70 °C

AC220V/1PH/50Hz

AC220V/1PH/50Hz

AC220V/1PH/50Hz

AC220V/1PH/50Hz

AC220V/1PH/50Hz

92%~99%

92%~99%

92%~99%

92%~99%

92%~99%

9~10bar/130~145psi

9~10bar/130~145psi

9~10bar/130~145psi

9~10bar/130~145psi

9~10bar/130~145psi

5.5~7.5kw,10bar,  
1~1.5m³/min

5.5~7.5kw,10bar,  
1~1.5m³/min

5.5~7.5kw,10bar,  
1~1.5m³/min

5.5~7.5kw,10bar,  
1~1.5m³/min

5.5~7.5kw,10bar,  
1~1.5m³/min

1~6bar/15~87psi

1~6bar/15~87psi

1~6bar/15~87psi

1~6bar/15~87psi

1~6bar/15~87psi

98% & 40~60L/min

98% & 40~60L/min

98% & 40~60L/min

98% & 40~60L/min

98% & 40~60L/min

95% & 90~110L/min

95% & 90~110L/min

95% & 90~110L/min

95% & 90~110L/min

95% & 90~110L/min

92% & 110~130L/min

92% & 110~130L/min

92% & 110~130L/min

92% & 110~130L/min

92% & 110~130L/min

90L

90L

90L

90L

90L












## WS90 SERIES nitrogen generator



MODEL	WS90-2FX II	WS90-2FC II	WS90-2FCX II	WS90-2X II
<b>FUNCTION</b>				
>   Suit for				
>   Front and rear tire pressure difference	✓	✓	✓	✓
>   Inflating 4 tires same time				
>   Car dashboard LED screen	✓	✓	✓	✓
>   Vacuum		✓	✓	
>   OPS system	✓	✓	✓	✓
>   N2P system	✓		✓	✓
<b>STANDARD PARTS</b>				
>   Air inflator tube	Hose reel X 2	Hose reel X 2	Hose reel X 2	Hose X 2
>   High precision filter	1	1	1	1
>   Water/oil filter & separator	1	1	1	1
<b>SPECIFICATIONS</b>				
>   Applicable temperature	-30~70℃	-30~70℃	-30~70℃	-30~70℃
>   Power supply:	AC220V/1PH/50Hz	AC220V/1PH/50Hz	AC220V/1PH/50Hz	AC220V/1PH/50Hz
>   Nitrogen purity:	92%~99%	92%~99%	92%~99%	92%~99%
>   Air inlet pressure:	9~10bar/130~145psi	9~10bar/130~145psi	9~10bar/130~145psi	9~10bar/130~145psi
>   Air compressor required:	5.5~7.5kw,10bar, 1~1.5m³/min	5.5~7.5kw,10bar, 1~1.5m³/min	5.5~7.5kw,10bar, 1~1.5m³/min	5.5~7.5kw,10bar, 1~1.5m³/min
>   Nitrogen output pressure:	1~6bar/15~87psi	1~6bar/15~87psi	1~6bar/15~87psi	1~6bar/15~87psi
>   High purity mode:	98% & 40~60L/min	98% & 40~60L/min	98% & 40~60L/min	98% & 40~60L/min
>   Standard mode:	95% & 90~110L/min	95% & 90~110L/min	95% & 90~110L/min	95% & 90~110L/min
>   Large flow mode:	92% & 110~130L/min	92% & 110~130L/min	92% & 110~130L/min	92% & 110~130L/min
>   N2 tank capacity:	90L	90L	90L	90L

## WS90 SERIES nitrogen generator



MODEL	WS90-2C II	WS90-2CX II	WS90-4FX II	WS90-4X II
<b>FUNCTION</b>				
>   Suit for	  	  	  	  
>   Front and rear tire pressure difference	✓	✓	✓	✓
>   Inflating 4 tires same time			✓	✓
>   Car dashboard LED screen	✓	✓	✓	✓
>   Vacuum	✓	✓		
>   OPS system	✓	✓	✓	✓
>   N2P system		✓	✓	✓
<b>STANDARD PARTS</b>				
>   Air inflator tube	Hose X 2	Hose X 2	Hose reel X 4	Hose X 4
>   High precision filter	1	1	1	1
>   Water/oil filter & separator	1	1	1	1
<b>SPECIFICATIONS</b>				
>   Applicable temperature	-30~70℃	-30~70℃	-30~70℃	-30~70℃
>   Power supply:	AC220V/1PH/50Hz	AC220V/1PH/50Hz	AC220V/1PH/50Hz	AC220V/1PH/50Hz
>   Nitrogen purity:	92%~99%	92%~99%	92%~99%	92%~99%
>   Air inlet pressure:	9~10bar/130~145psi	9~10bar/130~145psi	9~10bar/130~145psi	9~10bar/130~145psi
>   Air compressor required:	5.5~7.5kw,10bar, 1~1.5m³/min	5.5~7.5kw,10bar, 1~1.5m³/min	5.5~7.5kw,10bar, 1~1.5m³/min	5.5~7.5kw,10bar, 1~1.5m³/min
>   Nitrogen output pressure:	1~6bar/15~87psi	1~6bar/15~87psi	1~6bar/15~87psi	1~6bar/15~87psi
>   High purity mode:	98% & 40~60L/min	98% & 40~60L/min	98% & 40~60L/min	98% & 40~60L/min
>   Standard mode:	95% & 90~110L/min	95% & 90~110L/min	95% & 90~110L/min	95% & 90~110L/min
>   Large flow mode:	92% & 110~130L/min	92% & 110~130L/min	92% & 110~130L/min	92% & 110~130L/min
>   N2 tank capacity:	90L	90L	90L	90L



## WS90 SERIES nitrogen generator



### MODEL

WS90D-FC

WS90D-C

WS90-FC/MO

WS90-2FC/MO

### FUNCTION

> Suit for	 	 	   	   
> Front and rear tire pressure difference			/	/
> Inflating 4 tires same time				
> Car dashboard LED screen	✓	✓	✓	✓
> Vacuum	✓	✓	✓	✓
> OPS system			✓	✓
> N2P system				

### STANDARD PARTS

> Air inflator tube	Hose reel X 1	Hose X 1	Hose reel X 1	Hose reel X 2
> High precision filter	1	1	1	1
> Water/oil filter & separator	1	1	1	1

### SPECIFICATIONS

> Applicable temperature	-35~70℃	-35~70℃	-30~70℃	-30~70℃
> Power supply:	AC220V/1PH/50Hz	AC220V/1PH/50Hz	AC220V/1PH/50Hz	AC220V/1PH/50Hz
> Nitrogen purity:	92%~99%	92%~99%	92%~99%	92%~99%
> Air inlet pressure:	15~16bar/218~230psi	15~16bar/218~230psi	9~10bar/130~145psi	9~10bar/130~145psi
> Air compressor required:	15kw, 16bar, 1.5m³/min	15kw, 16bar, 1.5m³/min	5.5~7.5kw, 10bar, 1~1.5m³/min	5.5~7.5kw, 10bar, 1~1.5m³/min
> Nitrogen output pressure:	7~13bar/100~190psi	7~13bar/100~190psi	1~6bar/15~87psi	1~6bar/15~87psi
> High purity mode:	98% & 50~65L/min	98% & 50~65L/min	98% & 40~60L/min	98% & 40~60L/min
> Standard mode:	95% & 95~120L/min	95% & 95~120L/min	95% & 90~110L/min	95% & 90~110L/min
> Large flow mode:	92% & 120~140L/min	92% & 120~140L/min	92% & 110~130L/min	92% & 110~130L/min
> N2 tank capacity:	90L	90L	90L	90L

# BRIEF INTRODUCTION

## HISTORY OF NITROGEN USED IN TYRE INFLATION

According to the statistics from world concerned organization, 46% high speed car driving accident was caused by tyre problems; over-inflation takes its 70% . Using nitrogen instead of common air will highly reduce the over-inflation accident. It was already used on the tyres of aircraft 20 years ago for extending the tyres life and performance. Nowadays nitrogen for tyre inflation has become more and more popular for formula cars, racing cars, saloon cars, heavy duty trucks and also small vehicles, in order to maintain the high speed and heavy duty transportation performance.

## PRINCIPLE INTRODUCTION

Traditional medium for tyres inflation was COMPRESSED AIR, which contains oxygen(21%),nitrogen(78%)and some other gases together such as water vapour, helium and other trace gases. This will increase temperature and pressure in the tyre after a period of high speed driving. Too much temperature and pressure will lower the mechanical and physical capability of tyres.

Nitrogen is a kind of inert gas which has stable chemical and physical speciality. Nitrogen in tyre will avoid oxidation of tyre and rim, and cannot be easily affected by the changing of temperature, with only 1/5 noise conductivity in comparison with ordinary air. So using nitrogen as the gas in tyre will build a more comfortable driving life.

## PSA TECHNOLOGY

PSA(Pressure Swimmng Adsorption) technology for nitrogen generation use special filtration for nitrogen separation. Oil vapour is eliminated through the filtration, water vapour, helium and oxygen diffuse more quickly than nitrogen, so that nitrogen is mainly left as the product. The purity of nitrogen generated can ordinarily reach more than 95%.

## CORRECT INFLATION VS. UNDER INFLATION



Correct inflation is highly significant when considering tire life and performance. It is not always possible to look at a tire and detect under-inflation. However, under-inflation can cause many tire related problems. As inflation pressure largely determines a tire's load capacity, under-inflation results in an overloaded tire. An under-inflated tire operates at high deflection resulting in decreased fuel economy, sluggish handling and may result in excessive mechanical flexing and heat build up leading to catastrophic tire failure.



Semi-automatic



## FEATURES

- With independent vacuum generation and N2 inflation device.

## HP-1350 PARAMETERS

>   Suit for	Car & Light truck
>   Power	220V ± 10% , 50/60HZ
>   Nitrogen purity	95-99%
>   Air inlet pressure	9-10bar,130-145psi
>   Air compressor required	5.5~7.5kw,10bar, 1~1.5m <sup>3</sup> /min
>   Nitrogen output pressure	1~6bar,15~87psi
>   Output capacity	30-50L/min, 7.9-13.2 gallon/min
>   N2 tank capacity	50L/13.2 gallon inside
>   Standard	2 hoses+vaccum generator & N2 inflator
>   Dimension	620 * 445 * 1145 mm
>   N.W./G.W.	74/77kg



Semi-automatic



## FEATURES

- With independent vacuum generation and N2 inflation device.

## HP-1370B/DN PARAMETERS

>   Suit for	Car & Light truck
>   Power	220V ± 10% , 50/60HZ
>   Nitrogen purity	95-99%
>   Air inlet pressure	9-10bar,130-145psi
>   Air compressor required	5.5~7.5kw,10bar, 1~1.5m <sup>3</sup> /min
>   Nitrogen output pressure	1~6bar,15~87psi
>   Output capacity	50-70L/min, 13.2-18.5 gallon/min
>   N2 tank capacity	50L/13.2 gallon inside
>   Standard	2 hoses+vaccum generator & N2 inflator
>   Dimension	620 * 445 * 1145 mm
>   N.W./G.W.	92/95kg

## FEATURES

- Larger LED digital display for pressure.
- Equipped with full automatic water/oil vapor separator, it can drain the water out automatically at any time.

### HP-1370A/EN PARAMETERS

> Display	LED
> Suit for	Car & Light truck
> Power	220V ± 10% , 50/60HZ
> Nitrogen purity	95~99%
> Air inlet pressure	9~10bar,130~145psi
> Air compressor required	5.5~7.5kw,10bar, 1~1.5m³/min
> Nitrogen output pressure	1~6bar,15~87psi
> Output capacity	50~70L/min, 13.2~18.5 gallon/min
> N2 tank capacity	50L/13.2 gallon inside
> Standard	N2 pipe
> Dimension	620*445*1145 mm
> N.W./G.W.	91/94kg

### Full automatic



## FEATURES

- Larger LED digital display for pressure.
- Equipped with full automatic hose-reel. one pipe finish all functions.
- Equipped with full automatic water/oil vapor separator it can drain the water out automatically.

### HP-1370A/FN PARAMETERS

> Display	LED
> Suit for	Car & Light truck
> Power	220V ± 10% , 50/60HZ
> Nitrogen purity	95~99%
> Air inlet pressure	9~10bar,130~145psi
> Air compressor required	5.5~7.5kw,10bar, 1~1.5m³/min
> Nitrogen output pressure	1~6bar,15~87psi
> Output capacity	50~70L/min, 13.2~18.5 gallon/min
> N2 tank capacity	50L/13.2 gallon inside
> Standard	Automatic hose – reel(9.5m)
> Dimension	620*445*1145/320*275*175 mm
> N.W./G.W.	94/97.5kg

### Full automatic w/hose-reel







### Full automatic



### FEATURES

- Equipped with full automatic water/oil vapor separator, it can drain the water out automatically.

### HP-1370A/MO PARAMETERS

> Display	LED
>   Suit for	Motorcycle, Car & Light truck
> Power	220V ± 10%, 50/60HZ
>   Nitrogen generated	Through high quality filtration
>   Nitrogen purity	95~99%
> Air inlet pressure	8~10bar, 115~145psi
> Air compressor required	3~5.5kw, 8bar, 0.3~1.5m <sup>3</sup> /min
>   Nitrogen output pressure	1~6bar, 15~87psi
> Output capacity	50~70L/min, 13.2~18.5 gallon/min
> N2 tank capacity	50L/13.2 gallon inside
>   Standard	1 Hose and inflating clamp
> Dimension	730*445*1120 mm
>   N.W./G.W.	91/94kg



### Full automatic w/lcd & hose-reel



### FEATURES

- Larger LCD digital display for pressure.
- Equipped with full automatic hose-reel, one pipe finish all functions.
- Equipped with full automatic water/oil vapor separator, it can drain the water out automatically.

### HP-1370A/LCD PARAMETERS

> Display	LCD
>   Suit for	Car & Light truck
> Power	220V ± 10%, 50/60HZ
>   Nitrogen purity	95~99%
> Air inlet pressure	9~10bar, 130~145psi
> Air compressor required	5.5~7.5kw, 10bar, 1~1.5m <sup>3</sup> /min
>   Nitrogen output pressure	1~6bar, 15~87psi
> Output capacity	50~70L/min, 13.2~15.8 gallon/min
> N2 tank capacity	50L/13.2 gallon inside
>   Standard	Automatic hose - reel(9.5m)
> Dimension	620*445*1145 mm
>   N.W./G.W.	71/74kg

## FEATURES

- Equipped with full automatic hose-reel. one pipe finish all functions.
- Equipped with full automatic water/oil vapor separator, it can drain the water out automatically.

## HP-1390A/FN PARAMETERS

> Display	LED
> Suit for	Car & Light truck
> Power	220V ± 10% , 50/60HZ
> Nitrogen purity	95-99%
> Air inlet pressure	9~10bar,130~145psi
> Air compressor required	5.5~7.5kw,10bar, 1~1.5m³/min
> Nitrogen output pressure	1~6bar,15~87psi
> Output capacity	60~80L/min, 15.8~21 gallon/min
> N2 tank capacity	50L/13.2 gallon inside
> Standard	Automatic hose – reel(9.5m)
> Dimension	620*445*1145/320*275*175 mm
> N.W./G.W.	107/110.5kg

### Full automatic w/hose-reel



## FEATURES

- Larger LCD digital display for pressure.
- Equipped with full automatic hose-reel. one pipe finish all functions.
- Equipped with full automatic water/oil vapor separator, it can drain the water out automatically.

## HP-1390A/LCD PARAMETERS

> Display	LCD
> Suit for	Car & Light truck
> Power	220V ± 10% , 50/60HZ
> Nitrogen purity	95-99%
> Air inlet pressure	9~10bar,130~145psi
> Air compressor required	5.5~7.5kw,10bar, 1~1.5m³/min
> Nitrogen output pressure	1~6bar,15~87psi
> Output capacity	60~80L/min, 15.8~21 gallon/min
> N2 tank capacity	50L/13.2 gallon inside
> Standard	Automatic hose – reel(9.5m)
> Dimension	620*445*1145/320*275*175 mm
> N.W./G.W.	98/101kg

### Full automatic w/lcd & hose-reel





Semi-automatic



## FEATURES

- With independent vacuum generation and N2 inflation device.

HP-1650	PARAMETERS
>   Suit for	Car & Light truck
>   Power	220V ± 10% , 50/60HZ
>   Nitrogen generated	Through high quality filtration
>   Nitrogen purity	95~99%
>   Air inlet pressure	9~10bar,130~145psi
>   Air compressor required	5.5~7.5kw,10bar, 1~1.5m <sup>3</sup> /min
>   Nitrogen output pressure	1~6bar,15~87psi
>   Output capacity	30~50L/min, 7.9~13.2 gallon/min
>   N2 tank capacity	50L/13.2 gallon inside
>   Standard	2 hoses+vacuum generator & N2 inflator
>   Optional	High precision water/oil vapour filter, Automatic water drain-out fil ter
>   Dimension	730*530*1395 mm
>   N.W./G.W.	77/85kg



Semi-automatic



## FEATURES

- With independent vacuum generation and N2 inflation device.

HP-1670B/DN	PARAMETERS
>   Suit for	Car & Light truck
>   Power	220V ± 10% , 50/60HZ
>   Nitrogen generated	Through high quality filtration
>   Nitrogen purity	95~99%
>   Air inlet pressure	9~10bar,130~145psi
>   Air compressor required	5.5~7.5kw,10bar, 1~1.5m <sup>3</sup> /min
>   Nitrogen output pressure	1~6bar,15~87psi
>   Output capacity	50~70L/min, 13.2~18.5 gallon/min
>   N2 tank capacity	70L/18.5 gallon inside
>   Standard	2 hoses+vacuum generator & N2 inflator
>   Optional	High precision water/oil vapour filter, Automatic water drain-out fil ter
>   Dimension	730*530*1395 mm
>   N.W./G.W.	103/111kg

## FEATURES

- Equipped with high precision filter.
- Equipped with full automatic water/oil vapor separator, it can drain the water out automatically at any time.
- Double-level filtration help prolong the lifetime of main parts inside.

## HP-1670 A/EN PARAMETERS

> Suit for	Car & Light truck
> Power	220V ± 10%, 50/60HZ
> Nitrogen generated	Through high quality filtration
> Nitrogen purity	95~99%
> Air inlet pressure	9~10bar, 130~145psi
> Air compressor required	5.5~7.5kw, 10bar, 1~1.5m³/min
> Nitrogen output pressure	1~6bar, 15~87psi
> Output capacity	50~70L/min, 13.2~18.5 gallon/min
> N2 tank capacity	70L/18.5 gallon inside
> Standard	1 Hose
> Dimension	730*530*1395 mm
> N.W./G.W.	105/113kg

## Full automatic



## FEATURES

- Motorcycle button specially for motorcycle tyres.
- Larger LED digital display for pressure.
- Equipped with high precision filter.
- Equipped with full automatic water/oil vapor separator, it can drain the water out automatically at any time.
- Double-level filtration help prolong the lifetime of main parts inside.

## HP-1670 A/MO PARAMETERS

> Suit for	Motorcycle, Car & Light truck
> Power	220V ± 10%, 50/60HZ
> Nitrogen generated	Through high quality filtration
> Nitrogen purity	95~99%
> Air inlet pressure	9~10bar, 130~145psi
> Air compressor required	5.5~7.5kw, 10bar, 1~1.5m³/min
> Nitrogen output pressure	1~6bar, 15~87psi
> Output capacity	50~70L/min, 13.2~18.5 gallon/min
> N2 tank capacity	70L/18.5 gallon inside
> Standard	1 Hose
> Dimension	710*520*1390 mm
> N.W./G.W.	105/113kg

## Full automatic







### Full automatic w/hose-reel



### FEATURES

- Larger LED digital display for pressure.
- Equipped with full automatic hose-reel. one pipe finish all functions.
- Equipped with high precision filter.
- Equipped with full automatic water/oil vapor separator, it can drain the water out automatically at any time.
- Double-level filtration help prolong the lifetime of main parts inside.

### HP-1690 A/FN PARAMETERS

> Suit for	Car & Light truck
> Power	220V ± 10% , 50/60HZ
> Nitrogen generated	Through high quality filtration
> Nitrogen purity	95-99%
> Air inlet pressure	9~10bar,130~145psi
> Air compressor required	5.5~7.5kw,10bar, 1~1.5m <sup>3</sup> /min
> Nitrogen output pressure	1~6bar,15~87psi
> Output capacity	70~90L/min, 18.5~23.8 gallon/min
> N2 tank capacity	90L/24 gallon inside
> Standard	Automatic hose-reel
> Dimension	730*530*1395 mm
> N.W./G.W.	128/136kg



### Full automatic w/lcd & hose-reel



### FEATURES

- Larger LCD digital display for pressure.
- Equipped with full automatic hose-reel. one pipe finish all functions.
- Equipped with high precision filter.
- Equipped with full automatic water/oil vapor separator, it can drain the water out automatically at any time.
- Double-level filtration help prolong the lifetime of main parts inside.

### HP-1690 A/LCD PARAMETERS

> Suit for	Car & Light truck
> Power	220V ± 10% , 50/60HZ
> Nitrogen generated	Through high quality filtration
> Nitrogen purity	95-99%
> Air inlet pressure	9~10bar,130~145psi
> Air compressor required	5.5~7.5kw,10bar, 1~1.5m <sup>3</sup> /min
> Nitrogen output pressure	1~6bar,15~87psi
> Output capacity	70~90L/min, 18.5~23.8 gallon/min
> N2 tank capacity	90L/24 gallon inside
> Standard	Automatic hose-reel(9.5m)
> Dimension	730*530*1395 mm
> N.W./G.W.	125/133kg

## FEATURES

- Larger LCD digital display for pressure.
- Automatically test and control with an upgraded computer board.
- Equipped with high precision filter.
- Equipped with full automatic water/oil vapor separator.
- Double-level filtration help prolong the lifetime of main parts inside.
- Equipped with metal button prolong the lifetime of the keyboard.
- Functions:  
STD MODE / OPS MODE / N2P MODE / OPS+N2P /  
MANUAL & AUTOMATIC ALARM SYSTEM

## HP-2670 A/EN PARAMETERS

> Suit for	Car & Light truck
> Power	220V ± 10% , 50/60HZ
> Nitrogen generated	Through high quality filtration
> Nitrogen purity	95~99%
> Air inlet pressure	9~10bar, 130~145psi
> Air compressor required	5.5~7.5kw, 10bar, 1~1.5m³/min
> Nitrogen output pressure	1~6bar, 15~87psi
> Output capacity	50~70L/min, 13.2~18.5 gallon/min
> N2 tank capacity	70L/18.5 gallon inside
> Standard	1 pcs of 10m inflating hoses
> Dimension	730*530*1395 mm
> N.W./G.W.	105/111kg

## Full automatic W/LCD



## FEATURES

- Larger LCD digital display for pressure.
- Automatically test and control with an upgraded computer board.
- Equipped with high precision filter.
- Equipped with full automatic water/oil vapor separator.
- Double-level filtration help prolong the lifetime of main parts inside.
- Equipped with metal button prolong the lifetime of the keyboard.
- Functions:  
STD MODE / OPS MODE / N2P MODE / OPS+N2P /  
MANUAL & AUTOMATIC ALARM SYSTEM

## HP-2670 A/FN PARAMETERS

> Suit for	Car & Light truck
> Power	220V ± 10% , 50/60HZ
> Nitrogen generated	Through high quality filtration
> Nitrogen purity	95~99%
> Air inlet pressure	9~10bar, 130~145psi
> Air compressor required	5.5~7.5kw, 10bar, 1~1.5m³/min
> Nitrogen output pressure	1~6bar, 15~87psi
> Output capacity	50~70L/min, 13.2~18.5 gallon/min
> N2 tank capacity	70L/18.5 gallon inside
> Standard	Pcs of 9.5m automatic hose-reel
> Dimension	730*530*1395 mm
> N.W./G.W.	108/114kg

## Full automatic w/lcd & hose-reel





### Full automatic w/lcd,4 tires Inflation simultaneously



#### FEATURES

- Larger LCD digital display for pressure.
- Automatically test and control with an upgraded computer board.
- Equipped with 4pcs hose, it makes the machine allow simultaneous inflation of up to 4 tires.
- Equipped with high precision filter.
- Equipped with full automatic water/oil vapor separator.
- Double-level filtration help prolong the lifetime of main parts inside.
- Equipped with metal button prolong the lifetime of the keyboard.
- Functions:  
STD MODE / OPS MODE / N2P MODE / OPS+N2P / MANUAL & AUTOMATIC ALARM SYSTEM

#### HP-2690 A/4EN PARAMETERS

> Suit for	Car & Light truck
> Power	220V ± 10% , 50/60HZ
> Nitrogen generated	Through high quality filtration
> Nitrogen purity	95~99%
> Air inlet pressure	9~10bar,130~145psi
> Air compressor required	5.5~7.5kw,10bar, 1~1.5m³/min
> Nitrogen output pressure	1~6bar,15~87psi
> Output capacity	70~90L/min, 18.5~23.8 gallon/min
> N2 tank capacity	70L/18.5 gallon inside
> Standard	4pcs of 10m inflating hoses
> Dimension	730*530*1395 mm
> N.W./G.W.	126/132kg



### Full automatic w/lcd, 4 hose-reel for 4 tires inflation simultaneously



#### FEATURES

- Larger LCD digital display for pressure.
- Automatically test and control with an upgraded computer board.
- Equipped with 4pcs automatic hose-reel, it makes the machine allow simultaneous inflation of up to 4 tires.
- Equipped with high precision filter.
- Equipped with full automatic water/oil filter & separator.
- Double-level filtration help prolong the lifetime of main parts inside.
- Equipped with metal button prolong the lifetime of the keyboard.
- Functions:  
STD MODE / OPS MODE / N2P MODE / OPS+N2P / MANUAL & AUTOMATIC ALARM SYSTEM

#### HP-2690 A/4FN PARAMETERS

> Suit for	Car & Light truck
> Power	220V ± 10% , 50/60HZ
> Nitrogen generated	Through high quality filtration
> Nitrogen purity	95~99%
> Air inlet pressure	9~10bar,130~145psi
> Air compressor required	5.5~7.5kw,10bar, 1~1.5m³/min
> Nitrogen output pressure	1~6bar,15~87psi
> Output capacity	70~90L/min, 18.5~23.8 gallon/min
> N2 tank capacity	70L/18.5 gallon inside
> Standard	4 pcs of 9.5m automatic hose-reel
> Dimension	730*530*1395 mm
> N.W./G.W.	137/143kg



## FEATURES

- Larger LCD digital display for pressure.
- Automatically test and control with an upgraded computer board.
- Equipped with 4pcs automatic hose-reel, it makes the machine allow simultaneous inflation of up to 4 tires.
- Equipped with high precision filter.
- Equipped with full automatic water/oil vapor separator.
- Double-level filtration help prolong the lifetime of main parts inside.
- Equipped with metal button prolong the lifetime of the keyboard.
- Functions:  
STD MODE / OPS MODE / N2P MODE / OPS+N2P / MANUAL & AUTOMATIC ALARM SYSTEM

## HP-3690 A/4FN PARAMETERS

> Suit for	Car & Light truck
> Power	220V ± 10% , 50/60HZ
> Nitrogen generated	Through high quality filtration
> Nitrogen purity	95~99%
> Air inlet pressure	9~10bar,130~145psi
> Air compressor required	5.5~7.5kw,10bar, 1~1.5m³/min
> Nitrogen output pressure	1~6bar,15~87psi
> N2 tank capacity	70~90L/min, Standard 18.5~23.8 gallon/min
> Dimension	70L/18.5 gallon inside
> N.W./G.W.	4 pcs of 9.5m automatic hose-reel 730*530*1395 mm 137/143kg

**Full automatic w/lcd & hose-reel for 4 tires  
inflation simultaneously  
Inflate front two wheels & rear two wheels  
with different Inflation pressure at one time**



## HN-630B PARAMETERS

> Suit for	Car
> Power	220V ± 10% , 50/60HZ
> Nitrogen generated	Through high quality filtration
> Nitrogen purity	95~99%
> Air inlet pressure	9~10bar,130~145psi
> Air compressor required	5.5~7.5kw,10bar, 1~1.5m³/min
> Nitrogen output pressure	1~6bar,15~87psi
> Output capacity	30~50L/min, 7.9~13.2 gallon/min
> N2 tank capacity	130L/34 gallon outside(optional)
> Standard	2 hoses+vaccum generator & N2 inflator
> Dimension	530*230*1170 mm
> N.W./G.W.	48/50kg



**Thin design, wall mounted**







### Heavy pressure for heavy truck



### Heavy pressure for heavy truck Full automatic W/LED



#### FEATURES

- Heavy duty suit for heavy truck
- Fast nitrogen generation & inflation speed.
- 200L nitrogen tank enables enough storage of N2 for rush hours.
- Equipped with high pressure & precision oil/water vapor filter & separator.

#### HP-S1860/100 HP-S1860A/EN-100 PARAMETERS

> Suit for	7~13 bar tire pressure
> Power	220V ± 10% , 50/60HZ
> Nitrogen generated	High quality filtration
> Nitrogen purity	95~99%
> Air inlet pressure	15bar,215psi
> Air compressor required	5.5~7.5kw,15bar, 1.5m <sup>3</sup> /min
> Nitrogen output pressure	7~13bar,100~185psi
> Output capacity	100~120L/min, 26.5~31.7 gallon/min
> N2 tank capacity	70L/18.5 gallon inside, ≈ 130L/34.5 gallon outside(optional)
> Standard	2 hoses +vacuum generator & N2 inflator(HP-S1860/100) 1 hose (HP-S1860A/EN-100)
> Optional	220L/58 gallon N2 tank external
> Dimension	730*530*1520 mm
> N.W./G.W.	147/155kg

#### HP-S1860/250 HP-S1860A/EN-250 PARAMETERS

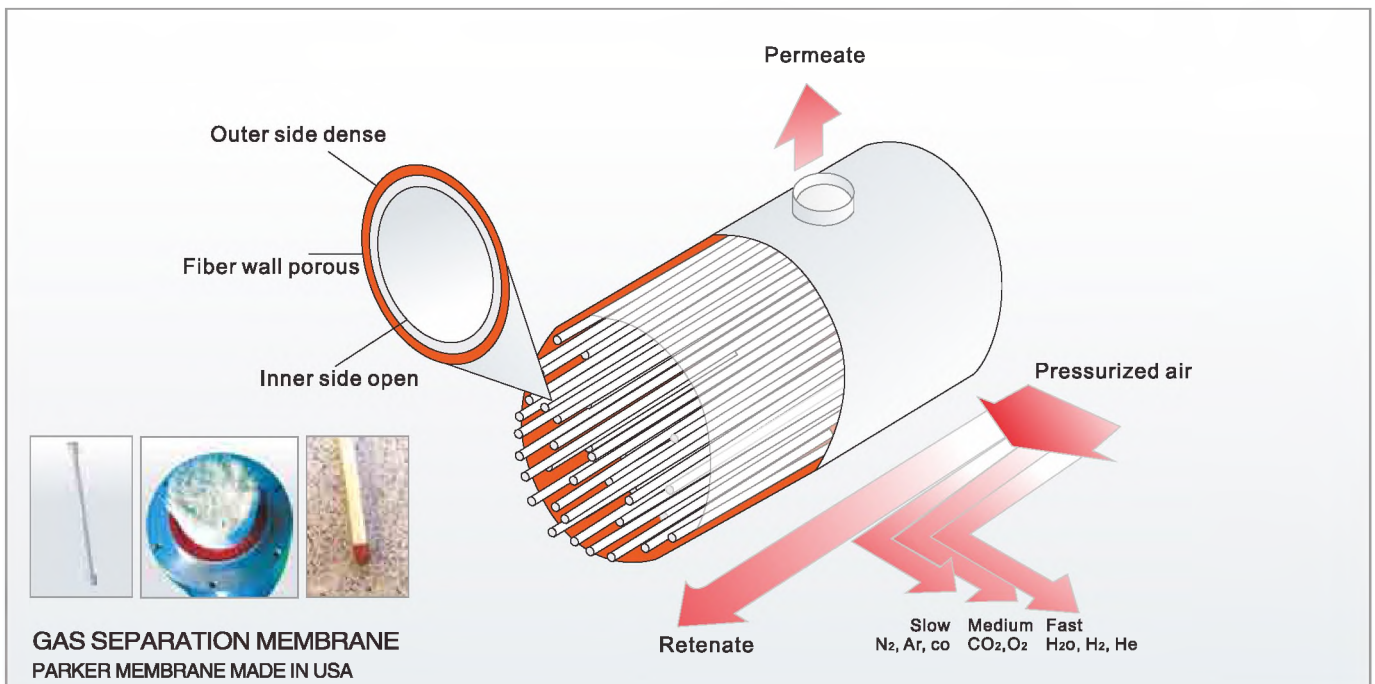
> Suit for	7~13 bar tire pressure
> Power	220V ± 10% , 50/60HZ
> Nitrogen generated	High quality filtration
> Nitrogen purity	95~99%
> Air inlet pressure	15bar,215psi
> Air compressor required	5.5~7.5kw,15bar, 1.5m <sup>3</sup> /min
> Nitrogen output pressure	7~13bar,100~185psi
> Output capacity	200~250L/min, 52.8~66 gallon/min
> N2 tank capacity	70L/18.5 gallon inside, ≈ 130L/34.5 gallon outside(optional)
> Standard	2 hoses +vacuum generator & N2 inflator(HP-S1860/250) 1 hose (HP-S1860A/EN-250)
> Optional	220L/58 gallon N2 tank external
> Dimension	730*530*1520 mm
> N.W./G.W.	183/192kg

Heavy truck w/high quality  
Hollow fibre membrane



**HN-6125M PARAMETERS**

> Suit for	Cars & Limousine, light & high trucks
> Power	220V ± 10%, 50/60HZ
> Nitrogen generated	Through hollow fiber membrane
> Nitrogen purity	95-99%
> Air inlet pressure	14.5bar, 207psi
> Air compressor required	5.5~7.5kw, 15bar, 1.5m³/min
> Nitrogen output pressure	Less than 13bar, 185psi
> Output capacity	80~100L/min
> N2 tank capacity	130L/34 gallon inside
> Standard	2 hoses+vaccum generator & N2 Inflator
> Dimension	770*650*1420 mm
> N.W./G.W.	120/130kg





# FULL AUTOMATIC TYRE INFLATOR

07





Quick nozzle with  
excellent air-tightness  
Flow rate(400l/min,10bar)



High proof  
pressure  
inflation tube



general type for  
cars 1~7bar



Intelligent warning  
for false alarm

## FEATURES

- Automatically memorize the latest inflation pressure, save pressure setting time and improve working efficiency
- Intelligent logic control, key component adopts high precision pressure sensor, fast inflation speed and high accuracy
- Tyre pressure detection

## HJS701B PARAMETERS

>   Voltage	AC220V/110V
>   Power	22W
>   Air inlet pressure	4-10Bar/58-145Psi
>   Air outlet pressure	1-7Bar/15-100Psi
>   Maximum flow rate	400L/min(10Bar)
>   Pressure precision range	±0.5%
>   Inflation hose & qty	Φ 13*10M*1
>   Screen (mm)	LED(58X26)
>   Size (mm)	L220*W210*H410

## HJS701B-LX PARAMETERS

>   Voltage	AC220V/110V
>   Power	22W
>   Air inlet pressure	4-10Bar/58-145Psi
>   Air outlet pressure	1-7Bar/15-100Psi
>   Maximum flow rate	400L/min(10Bar)
>   Pressure precision range	±0.5%
>   Inflation hose & qty	Φ 13*10M*1
>   Screen (mm)	LED(58X26)
>   Size (mm)	L220*W210*H1080



Quick nozzle with  
excellent air-tightness  
Flow rate(400l/min,10bar)



High proof  
pressure  
inflation tube



general type for  
cars 1~7bar



Intelligent warning  
for false alarm



## FEATURES

- Automatically memorize the latest inflation pressure, save pressure setting time and improve working efficiency
- Intelligent logic control, key component adopts high precision pressure sensor, fast inflation speed and high accuracy
- Tyre pressure detection

### HJS711B PARAMETERS

> Voltage	AC220V/110V
> Power	22W
> Air inlet pressure	4-10Bar/58-145Psi
> Air outlet pressure	1-7Bar/15-100Psi
> Maximum flow rate	400L/min(10Bar)
> Pressure precision range	±0.5%
> Inflation hose & qty	Φ13*10M*1
> Screen (mm)	LCD(80X40)
> Size (mm)	L220*W210*H410

### HJS711B-LX PARAMETERS

> Voltage	AC220V/110V
> Power	22W
> Air inlet pressure	4-10Bar/58-145Psi
> Air outlet pressure	1-7Bar/15-100Psi
> Maximum flow rate	400L/min(10Bar)
> Pressure precision range	±0.5%
> Inflation hose & qty	Φ13*10M*1
> Screen (mm)	LCD(80X40)
> Size (mm)	L220*W210*H1080



Quick nozzle with  
excellent air-tightness  
Flow rate(400l/min,10bar)



general type for  
cars 1-7bar



Intelligent warning  
for false alarm



Quick nozzle with  
excellent air-tightness  
Flow rate(400l/min,10bar)



general type for  
cars 1-7bar



Intelligent warning  
for false alarm



Quick nozzle with excellent air-tightness  
Flow rate(400l/min,10bar)



general type for cars 1~7bar



Intelligent warning for false alarm



Quick nozzle with excellent air-tightness  
Flow rate(400l/min,10bar)



general type for cars 1~7bar



Intelligent warning for false alarm

## FEATURES

- Automatically memorize the latest inflation pressure, save pressure setting time and improve working efficiency
- Intelligent logic control, key component adopts high precision pressure sensor, fast inflation speed and high accuracy
- Tyre pressure detection

## HJ921B PARAMETERS

> Voltage	AC220V/110V
> Power	22W
> Air inlet pressure	4-10Bar/58-145Psi
> Air outlet pressure	1-7Bar/15-100Psi
> Maximum flow rate	400L/min(10Bar)
> Pressure precision range	±0.5%
> Inflation hose & qty	Φ13*10M*1
> Screen (mm)	LCD(80X40)
> Size (mm)	L246*W90*H615

## HJ921B-J PARAMETERS

> Voltage	AC220V/110V
> Power	22W
> Air inlet pressure	4-10Bar/58-145Psi
> Air outlet pressure	1-7Bar/15-100Psi
> Maximum flow rate	400L/min(10Bar)
> Pressure precision range	±0.5%
> Inflation hose & qty	Automatic hose Φ12*8/9.5M*1
> Screen (mm)	LCD(80X40)
> Size (mm)	L290*W192*H695

## FEATURES

- Automatically memorize the latest inflation pressure, save pressure setting time and improve working efficiency
- Intelligent logic control, key component adopts high precision pressure sensor, fast inflation speed and high accuracy
- Tyre pressure detection

### HJ921B-LX PARAMETERS

> Voltage	AC220V/110V
> Power	22W
> Air inlet pressure	4-10Bar/58-145Psi
> Air outlet pressure	1-7Bar/15-100Psi
> Maximum flow rate	400L/min(10Bar)
> Pressure precision range	±0.5%
> Inflation hose & qty	Φ 13*10M*1
> Screen (mm)	LCD(80X40)
> Size (mm)	L320*W285*H1170

### HJ921B-JX PARAMETERS

> Voltage	AC220V/110V
> Power	22W
> Air inlet pressure	4-10Bar/58-145Psi
> Air outlet pressure	1-7Bar/15-100Psi
> Maximum flow rate	400L/min(10Bar)
> Pressure precision range	±0.5%
> Inflation hose & qty	Automatic hose Φ 12*8/9.5M*1
> Screen (mm)	LCD(80X40)
> Size (mm)	L320*W285*H1170



Quick nozzle with  
excellent air-tightness  
Flow rate(400l/min,10bar)



general type for  
cars 1-7bar



Intelligent warning  
for false alarm



High proof  
pressure  
inflation tube



Quick nozzle with  
excellent air-tightness  
Flow rate(400l/min,10bar)



general type for  
cars 1-7bar



Intelligent warning  
for false alarm



9.5m  
Extensible





## FEATURES

- Full automatic air inflation and discharge function
- Automatically memorize the latest inflation pressure, save pressure setting time and improve working efficiency
- Finger pressing film, long service life and easy to change
- Intelligent logic control, key component adopts high precision pressure sensor, fast inflation speed and high accuracy
- IP54 grade waterproof design, beautiful, sturdy and durable
- Tyre pressure detection

## > HJ931B PARAMETERS

> Voltage	AC220V/110V
> Power	32W
> Air inlet pressure	4-10Bar/58-145Psi
> Air outlet pressure	1-7Bar/15-100Psi
> Maximum flow rate	400L/min(10Bar)
> Pressure precision range	±0.5%
> Inflation hose & qty	Φ 13*10M*1
Screen (mm)	LED(86X39)
> Size (mm)	L246*W90*H615

## HJ931B-J PARAMETERS

> Voltage	AC220V/110V
> Power	32W
> Air inlet pressure	4-10Bar/58-145Psi
> Air outlet pressure	1-7Bar/15-100Psi
> Maximum flow rate	400L/min(10Bar)
> Pressure precision range	±0.5%
> Inflation hose & qty	Automatic hose Φ 12*8/9.5M*1
Screen (mm)	LED(86X39)
> Size (mm)	L290*W192*H695





## FEATURES

- Full automatic air inflation and discharge function
- Automatically memorize the latest inflation pressure, save pressure setting time and improve working efficiency
- Finger pressing film, long service life and easy to change
- Intelligent logic control, key component adopts high precision pressure sensor, fast inflation speed and high accuracy
- IP54 grade waterproof design, beautiful, sturdy and durable
- Tyre pressure detection

### HJ931B-LX PARAMETERS

> Voltage	AC220V/110V
> Power	32W
> Air inlet pressure	4-10Bar/58-145Psi
> Air outlet pressure	1-7Bar/15-100Psi
> Maximum flow rate	400L/min(10Bar)
> Pressure precision range	±0.5%
> Inflation hose & qty	Φ 13*10M*1
> Screen (mm)	LED(86X39)
> Size (mm)	L320*W285*H1170

### HJ931B-JX PARAMETERS

> Voltage	AC220V/110V
> Power	32W
> Air inlet pressure	4-10Bar/58-145Psi
> Air outlet pressure	1-7Bar/15-100Psi
> Maximum flow rate	400L/min(10Bar)
> Pressure precision range	±0.5%
> Inflation hose & qty	Automatic hose Φ 12*8/9.5M*1
> Screen (mm)	LED(86X39)
> Size (mm)	L320*W285*H1170



Quick nozzle with  
excellent air-tightness  
Flow rate(400l/min,10bar)



Quick nozzle with  
excellent air-tightness  
Flow rate(400l/min,10bar)



High proof  
pressure  
inflation tube



general type for  
cars 1-7bar



level of waterproof  
/dust-proof:IP54



Intelligent warning  
for false alarm



9.5m  
Extensible



general type for  
cars 1-7bar



level of waterproof  
/dust-proof:IP54



Intelligent warning  
for false alarm



## FEATURES

- Full automatic air inflation and discharge function
- Automatically memorize the latest inflation pressure, save pressure setting time and improve working efficiency
- Finger pressing film, long service life and easy to change
- Intelligent logic control, key component adopts high precision pressure sensor, fast inflation speed and high accuracy
- IP54 grade waterproof design, beautiful, sturdy and durable
- Tyre pressure detection

## HJ931BD PARAMETERS

> Voltage	AC220V/110V
> Power	32W
> Air inlet pressure	4-10Bar/58-145Psi 10-16Bar/145-232Psi
> Air outlet pressure	1-7Bar/15-100Psi 7-13Bar/100-190Psi
> Maximum flow rate	400L/min(10Bar)
> Pressure precision range	±0.5%
> Inflation hose & qty	Φ13*10M*1
> Screen (mm)	LED(86X39)
> Size (mm)	L246*W90*H615

## HJ931BD-J PARAMETERS

> Voltage	AC220V/110V
> Power	32W
> Air inlet pressure	4-10Bar/58-145Psi 10-16Bar/145-232Psi
> Air outlet pressure	1-7Bar/15-100Psi 7-13Bar/100-190Psi
> Maximum flow rate	400L/min(10Bar)
> Pressure precision range	±0.5%
> Inflation hose & qty	Automatic hose Φ12*8/9.5M*1
> Screen (mm)	LED(86X39)
> Size (mm)	L290*W192*H695



## FEATURES

- Full automatic air inflation and discharge function
- Automatically memorize the latest inflation pressure, save pressure setting time and improve working efficiency
- Finger pressing film, long service life and easy to change
- Intelligent logic control, key component adopts high precision pressure sensor, fast inflation speed and high accuracy
- IP54 grade waterproof design, beautiful, sturdy and durable
- Tyre pressure detection

### HJ931BD-LX PARAMETERS

> Voltage	AC220V/110V
> Power	32W
> Air inlet pressure	4-10Bar/58-145Psi 10-16Bar/145-232Psi
> Air outlet pressure	1-7Bar/15-100Psi 7-13Bar/100-190Psi
> Maximum flow rate	400L/min(10Bar)
> Pressure precision range	±0.5%
> Inflation hose & qty	Φ 13*10M*1
> Screen (mm)	LED(86X39)
> Size (mm)	L320*W285*H1170

### HJ931BD-JX PARAMETERS

> Voltage	AC220V/110V
> Power	32W
> Air inlet pressure	4-10Bar/58-145Psi 10-16Bar/145-232Psi
> Air outlet pressure	1-7Bar/15-100Psi 7-13Bar/100-190Psi
> Maximum flow rate	400L/min(10Bar)
> Pressure precision range	±0.5%
> Inflation hose & qty	Automatic hose Φ 12*8/9.5M*1
> Screen (mm)	LED(86X39)
> Size (mm)	L320*W285*H1170



Quick nozzle with  
excellent air-tightness  
Flow rate(400l/min,10bar)



High proof  
pressure  
inflation tube



general type for  
cars 1~7bar/7~13bar



level of waterproof  
/dust-proof:IP54



Intelligent warning  
for false alarm



Quick nozzle with  
excellent air-tightness  
Flow rate(400l/min,10bar)



9.5m  
Extensible



general type for  
cars 1~7bar/7~13bar



level of waterproof  
/dust-proof:IP54



Intelligent warning  
for false alarm





High proof  
pressure  
inflation tube



High proof  
pressure  
inflation tube



9.5m  
Extensible

## FEATURES

- Full automatic air inflation and discharge function
- Automatically memorize the latest inflation pressure, save pressure setting time and improve working efficiency
- Intelligent logic control, key component adopts high precision pressure sensor, fast inflation speed and high accuracy
- IP54 grade waterproof design, beautiful, sturdy and durable
- Tyre pressure detection
- Large backlit lcd display screen

HJ951B	PARAMETERS
> Voltage	AC220V/110V
> Power	32W
> Air inlet pressure	4-10Bar/58-145Psi
> Air outlet pressure	1-7Bar/15-100Psi
> Maximum flow rate	400L/min(10Bar)
> Pressure precision range	±0.5%
> Inflation hose & qty	Φ 13*10M*1
> Screen (mm)	LCD(130X60)
> Size (mm)	L410*W78*H450

HJ951B-LX	PARAMETERS
> Voltage	AC220V/110V
> Power	32W
> Air inlet pressure	4-10Bar/58-145Psi
> Air outlet pressure	1-7Bar/15-100Psi
> Maximum flow rate	400L/min(10Bar)
> Pressure precision range	±0.5%
> Inflation hose & qty	Φ 13*10M*1
> Screen (mm)	LCD(130X60)
> Size (mm)	L320*W400*H1170

HJ951B-JX	PARAMETERS
> Voltage	AC220V/110V
> Power	32W
> Air inlet pressure	4-10Bar/58-145Psi
> Air outlet pressure	1-7Bar/15-100Psi
> Maximum flow rate	400L/min(10Bar)
> Pressure precision range	±0.5%
> Inflation hose & qty	Automatic hose Φ 12*8/9.5M*1
> Screen (mm)	LCD(130X60)
> Size (mm)	L320*W400*H1170





## FEATURES

- Full automatic air inflation and discharge function
- Automatically memorize the latest inflation pressure, save pressure setting time and improve working efficiency
- Intelligent logic control, key component adopts high precision pressure sensor, fast inflation speed and high accuracy
- IP54 grade waterproof design, beautiful, sturdy and durable
- Tyre pressure detection
- Large backlit lcd display screen

HJ951BD	PARAMETERS
>   Voltage	AC220V/110V
>   Power	32W
>   Air inlet pressure	4-10Bar/58-145Psi 10-16Bar/145-232Psi
>   Air outlet pressure	1-7Bar/15-100Psi 7-13Bar/100-190Psi
>   Maximum flow rate	400L/min(10Bar)
>   Pressure precision range	±0.5%
>   Inflation hose & qty	Φ 13*10M*1
>   Screen (mm)	LCD(130X60)
>   Size (mm)	L410*W78*H450

HJ951BD-LX	PARAMETERS
>   Voltage	AC220V/110V
>   Power	32W
>   Air inlet pressure	4-10Bar/58-145Psi 10-16Bar/145-232Psi
>   Air outlet pressure	1-7Bar/15-100Psi 7-13Bar/100-190Psi
>   Maximum flow rate	400L/min(10Bar)
>   Pressure precision range	±0.5%
>   Inflation hose & qty	Φ 13*10M*1
>   Screen (mm)	LCD(130X60)
>   Size (mm)	L320*W400*H1170

HJ951BD-JX	PARAMETERS
>   Voltage	AC220V/110V
>   Power	32W
>   Air inlet pressure	4-10Bar/58-145Psi 10-16Bar/145-232Psi
>   Air outlet pressure	1-7Bar/15-100Psi 7-13Bar/100-190Psi
>   Maximum flow rate	400L/min(10Bar)
>   Pressure precision range	±0.5%
>   Inflation hose & qty	Automatic hose Φ 12*8/9.5M*1
>   Screen (mm)	LCD(130X60)
>   Size (mm)	L320*W400*H1170



High proof pressure inflation tube



High proof pressure inflation tube



9.5m Extensible



Quick nozzle with excellent air-tightness  
Flow rate(400l/min,10bar)



general type for cars 1-7bar/7-13bar



level of waterproof/dust-proof:IP54



Intelligent warning for false alarm



**HJ961B**  
AUTOMATIC TYRE  
INFLATOR

High proof  
pressure  
inflation tube



**HJ961B-LX**  
AUTOMATIC TYRE  
INFLATOR

High proof  
pressure  
inflation tube



**HJ961B-JX**  
AUTOMATIC TYRE  
INFLATOR

9.5m  
Extensible

## FEATURES

- Full automatic air inflation and discharge function
- OPS over pressure inflation function
- N2P air purge function
- Automatically memorize the latest inflation pressure, save pressure setting time and improve working efficiency
- Intelligent logic control, key component adopts high precision pressure sensor, fast inflation speed and high accuracy
- IP54 grade waterproof design, beautiful, sturdy and durable
- Tyre pressure detection
- Large backlit lcd display screen

## HJ961B PARAMETERS

> Voltage	AC220V/110V
> Power	32W
> Air inlet pressure	4-10Bar/58-145Psi
> Air outlet pressure	1-7Bar/15-100Psi
> Maximum flow rate	400L/min(10Bar)
> Pressure precision range	±0.5%
> Inflation hose & qty	Φ13*10M*1
> Screen (mm)	LCD(130X60)
> Size (mm)	L410*W78*H450

## HJ961B-LX PARAMETERS

> Voltage	AC220V/110V
> Power	32W
> Air inlet pressure	4-10Bar/58-145Psi
> Air outlet pressure	1-7Bar/15-100Psi
> Maximum flow rate	400L/min(10Bar)
> Pressure precision range	±0.5%
> Inflation hose & qty	Φ13*10M*1
> Screen (mm)	LCD(130X60)
> Size (mm)	L320*W400*H1170

## HJ961B-JX PARAMETERS

> Voltage	AC220V/110V
> Power	32W
> Air inlet pressure	4-10Bar/58-145Psi
> Air outlet pressure	1-7Bar/15-100Psi
> Maximum flow rate	400L/min(10Bar)
> Pressure precision range	±0.5%
> Inflation hose & qty	Automatic hose Φ12*8/9.5M*1
> Screen (mm)	LCD(130X60)
> Size (mm)	L320*W400*H1170



Quick nozzle with  
excellent air-tightness  
Flow rate(400l/min,10bar)

general type for  
cars 1~7bar

level of  
waterproof  
/dust-proof:IP54

Intelligent  
warning for  
false alarm

## FEATURES

- Full automatic air inflation and discharge function
- OPS over pressure inflation function
- N2P air purge function
- Automatically memorize the latest inflation pressure, save pressure setting time and improve working efficiency
- Intelligent logic control, key component adopts high precision pressure sensor, fast inflation speed and high accuracy
- IP54 grade waterproof design, beautiful, sturdy and durable
- Tyre pressure detection
- Large backlit lcd display screen

### HJ961BD PARAMETERS

> Voltage	AC220V/110V
> Power	32W
> Air inlet pressure	4-10Bar/58-145Psi 10-16Bar/145-232Psi
> Air outlet pressure	1-7Bar/15-100Psi 7-13Bar/100-190Psi
> Maximum flow rate	400L/min(10Bar)
> Pressure precision range	±0.5%
> Inflation hose & qty	Φ13*10M*1
> Screen (mm)	LCD(130X60)
> Size (mm)	L410*W78*H450

### HJ961BD-LX PARAMETERS

> Voltage	AC220V/110V
> Power	32W
> Air inlet pressure	4-10Bar/58-145Psi 10-16Bar/145-232Psi
> Air outlet pressure	1-7Bar/15-100Psi 7-13Bar/100-190Psi
> Maximum flow rate	400L/min(10Bar)
> Pressure precision range	±0.5%
> Inflation hose & qty	Φ13*10M*1
> Screen (mm)	LCD(130X60)
> Size (mm)	L320*W400*H1170

### HJ961BD-JX PARAMETERS

> Voltage	AC220V/110V
> Power	32W
> Air inlet pressure	4-10Bar/58-145Psi 10-16Bar/145-232Psi
> Air outlet pressure	1-7Bar/15-100Psi 7-13Bar/100-190Psi
> Maximum flow rate	400L/min(10Bar)
> Pressure precision range	±0.5%
> Inflation hose & qty	Automatic hose Φ12*8/9.5M*1
> Screen (mm)	LCD(130X60)
> Size (mm)	L320*W400*H1170



Quick nozzle with  
excellent air-tightness  
Flow rate(400l/min,10bar)



general type for  
cars 1-7bar/  
7-13bar



level of  
waterproof/  
dust-proof:IP54



Intelligent  
warning for  
false alarm



# AIR CONDITIONER REFRIGERANT RECOVERY & RECHARGE MACHINE

08







Hand spin

**TYPE OF VEHICLE**



**REFRIGERANT**



**FEATURES**

- LCD screen
- Heat belt (optional)

**PL-AC100 PARAMETERS**

> Power supply	220V/50HZ/1PH
> Max. working pressure	17.5Bar
> Low pressure protection	Less than 1 bar
> Electronic scale precision(Recharge)	5G
> Compressor	3/8HP
> Size (mm)	L680*W560*H1145
> N.W./G.W.	64/80KG



**TYPE OF VEHICLE**



**REFRIGERANT**



**FEATURES**

- Full-automatic
- LCD screen
- Leakage test under negative pressure
- Self-test function
- Heat belt (optional)
- Small bottle fill function (optional)
- N2 flush function (optional)

**PL-AC200 PARAMETERS**

> Power supply	220V/50HZ/1PH
> Max. working pressure	17.5Bar
> Low pressure protection	Less than 1 bar
> Electronic scale precision(Recharge)	5G
> Compressor	3/8HP
> Size (mm)	L680*W560*H1145
> N.W./G.W.	67/83KG

180~350G/min

800~1500G/min

60L/min



Recovery speed



Recharge speed



Vacuum speed



10KG

0~35KG



Electronic scale range

300ML



Pag oil bottle capacity

5~50°C



Operating temperature

## FEATURES

- Full-automatic
- LCD screen
- Leakage test under negative pressure
- Self-test function
- The system covers nearly all car models for precious oil injection with most updated database. Also can upgrade for new car models.
- Small bottle fill function (optional)
- N2 flush function (optional)

## PL-AC300 PARAMETERS

> Power supply	220V/50HZ/1PH
> Max. working pressure	17.5Bar
> Low pressure protection	Less than 1 bar
> Electronic scale precision(Recharge)	5G
> Electronic scale range(Frozen oil)	0~2KG
> Electronic scale precision(Frozen oil)	1G
> Compressor	3/8HP
> Size (mm)	L680*W560*H1145
> N.W./G.W.	71/87KG



Quick coupling



Pressure gage



High/low pressure hose

Made in swiss



## TYPE OF VEHICLE



## REFRIGERANT

R134a

## TICKET PRINTER



## FEATURES

- Full-automatic
- Car database
- LCD screen
- Leakage test under negative pressure
- Self-test function
- Heat belt (optional)
- Small bottle fill function (optional)
- N2 flush function (optional)

## PL-AC300B PARAMETERS

> Power supply	220V/50HZ/1PH
> Max. working pressure	17.5Bar
> Low pressure protection	Less than 1 bar
> Electronic scale precision(Recharge)	5G
> Compressor	3/8HP
> Size (mm)	L680*W560*H1145
> N.W./G.W.	71/87KG



## TYPE OF VEHICLE



## REFRIGERANT

R134a

## TICKET PRINTER



180~350G/min



Recovery speed

800~1500G/min



Recharge speed

60L/min



Vacuum speed



0~35KG



Electronic scale range

300ML



Pag oil bottle capacity

5~50°C



Operating temperature



TYPE OF VEHICLE



REFRIGERANT



TICKET PRINTER



FEATURES

- Full-automatic
- LCD screen
- Leakage test under negative pressure
- Self-test function
- Heat belt (optional)
- Small bottle fill function (optional)
- N2 flush function (optional)

PL-AC500 PARAMETERS

> Power supply	220V/50HZ/1PH
> Max. working pressure	17.5Bar
> Low pressure protection	Less than 1 bar
> Electronic scale precision(Recharge)	5G
> Compressor	3/8HP
> Size (mm)	L680*W560*H1145
> N.W./G.W.	76/92KG

180~350G/min



Recovery speed

800~1500G/min



Recharge speed

60L/min



Vacuum speed



10KG

0~35KG



Electronic scale range

300ML



Pag oil bottle capacity

5~50°C



Operating temperature



TYPE OF VEHICLE



REFRIGERANT



FEATURES

- Full-automatic
- LCD screen
- Leakage test under negative pressure
- Self-test function
- Heat belt (optional)
- Small bottle fill function (optional)
- N2 flush function (optional)

HM-50 PARAMETERS

> Power supply	220V/50HZ/1PH
> Max. working pressure	17.5Bar
> Low pressure protection	Less than 1 bar
> Electronic scale precision(Recharge)	5G
> Compressor	1HP
> Size (mm)	L760*W695*H1285
> N.W./G.W.	114/143KG

500~700G/min



Recovery speed

800~1500G/min



Recharge speed

240L/min



Vacuum speed



20KG

0~50KG



Electronic scale range

300ML



Pag oil bottle capacity

5~50°C



Operating temperature



Free dismantle,air-operated,safe,easy,simple operation  
cleaning,changing oil/fluid from car systems(such as  
transmission system,engine system,fuel system,radiator  
system,power steering system,brake fluid system)

09

# OIL/FLUID EXCHANGER



OIL/FLUID  
EXCHANGER

# TRANSMISSION FLUID OIL EXCHANGER

Remove, clean and replace transmission fluid(ATF) from most types and models of automatic transmissions. Help to restore gearbox's speeding performance, to reduce vibration and oil consumption. Free of disassembling, time efficient and easy operation.

## MODEL NUMBER: GD-322LCD

- > Power 220V/50HZ/1PH
- > Operation Automatic
- > Working Pressure 70-90PSI
- > Suit For Gasoline/diesel vehicles
- > Meas. 650\*520\*1160mm
- > G.W. 60kgs
- > Operating Temperature Less than 80 °C

## MODEL NUMBER: GA-322

- > Power Air Compressor
- > Operation
- > Working Pressure 70-90PSI
- > Suit For Gasoline/diesel vehicles
- > Meas. 650\*520\*1160mm
- > G.W. 38.5kg
- > Operating Temperature Less than 80 °C

## MODEL NUMBER: GD-322B

- > Power 220V/50HZ/1PH
- > Operation
- > Working Pressure 70-90PSI
- > Suit For Gasoline/diesel vehicles
- > Meas. 650\*520\*1160mm
- > G.W. 38.5kg
- > Operating Temperature Less than 80 °C



- INCLUDES:  
Transmission fluid exchanger unit with fitting
- Pressure fill/return hose
- (2) fluid collecting bottles
- (24) assorted fitting/adapters
- (8) assorted hoses with clamps & O-rings
- Tool box








**GB-522A/GD-522A**  
 WATER TANK MAINTENANCE MACHINE

## WATER TANK MAINTENANCE MACHINE

Recycle clean and exchange waste coolant/water directly from the radiator spout or reservoir tank. Can be used on cars, SUV's and trucks. With the cooling system simply connected; the old fluid is sucked out and new fluid is filled in. Quick and easy for operation.

### MODEL NUMBER: GB-522A

> Power	Air Compressor
> Operation	
> Working Pressure	85~100PSI
> Suit For	Gasoline/diesel vehicles
> Operating Temperature	Less than 80 °C

### MODEL NUMBER: GD-522A

> Power	220V/50HZ/1PH
> Operation	
> Working Pressure	85~100PSI
> Suit For	Gasoline/diesel vehicles
> Operating Temperature	Less than 80 °C




**GC-622A/GD-622A**  
 POWER STEERING FLUID OIL EXCHANGER

### MODEL NUMBER: GC-622A

> Power	Air Compressor
> Operation	
> Working Pressure	85~100PSI
> Suit For	Gasoline/diesel vehicles
> Operating Temperature	Less than 80 °C

### MODEL NUMBER: GD-622A

> Power	220V/50HZ/1PH
> Operation	
> Working Pressure	85~100PSI
> Suit For	Gasoline/diesel vehicles
> Operating Temperature	Less than 80 °C

## SYSTEM CLEANER

Free of disassembling the engine aluminium pump.

Effectively solve the problem of difficult starting, unsteady idle and too much fuel consumption.

### MODEL NUMBER: GL-122

> Power	Air Compressor
> Operation	
> Working Pressure	70~90PSI
> Suit For	Gasoline/diesel vehicles
> Operating Temperature	Less than 80°C

### MODEL NUMBER: GD-122

> Power	220V/50HZ/1PH
> Operation	
> Working Pressure	80~120PSI
> Suit For	Gasoline/diesel vehicles
> Operating Temperature	Less than 80°C

### MODEL NUMBER: GF-220

> Power	Air Compressor
> Operation	
> Working Pressure	70~90PSI
> Suit For	Gasoline/diesel vehicles
> Operating Temperature	Less than 80°C

### MODEL NUMBER: GD-220

> Power	DC 12V
> Operation	
> Working Pressure	80~120PSI
> Suit For	Gasoline/diesel vehicles
> Operating Temperature	Less than 80°C



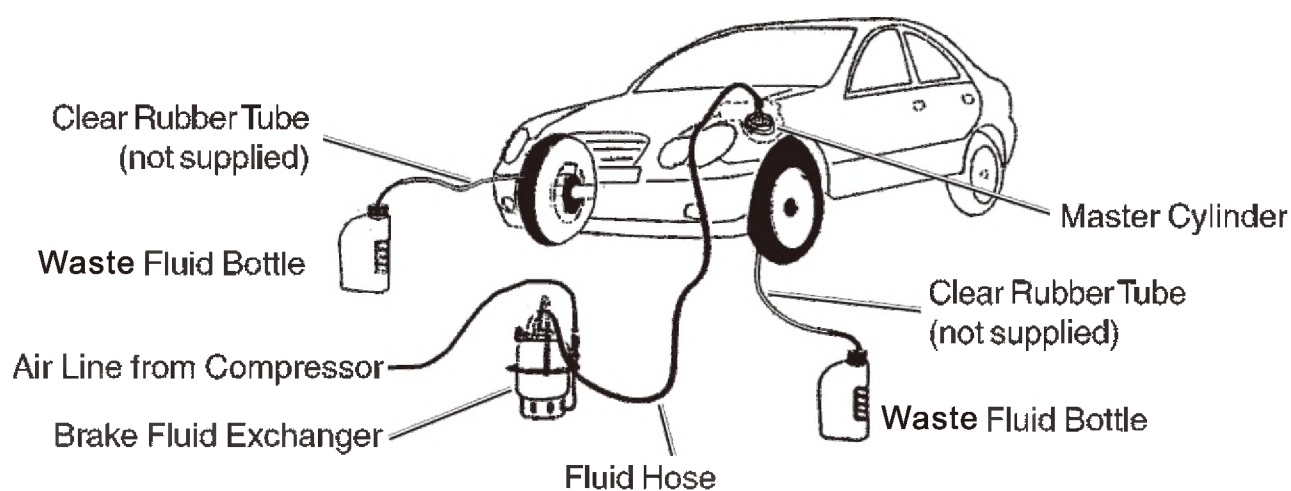


## BRAKE FLUID EXCHANGER

The simplified air-operated two-chamber brake bleeding device is suitable for bleeding hydraulic brakes and clutches of all motor vehicles. Equipped with an inner elastic hermetical membrane to separate oil from water in order to avoid the risk of being emulsified

### MODEL NUMBER: GD-422

> Power	220V/50HZ/1PH
> Operation	
> Working Pressure	85~100PSI
> Suit For	Gasoline/diesel vehicles
> Meas.	650*520*1160mm
> G.W.	38.5kg
> Operating Temperature	Less than 80 °C





## BRAKE BLEEDING

The simplified air-operated two-chamber brake bleeding device is suitable for bleeding hydraulic brakes and clutches of all motor vehicles. Equipped with an inner elastic hermetical membrane to separate oil from water in order to avoid the risk of being emulsified

### ITEM: GS-432

> Tank capacity	6L
> Oil max working pressure	3 bar
> Reserve tank max pressure	10 bar
> Delivery hose length	5m
> Safety valve	4bar

### ITEM: GS-452

> Tank capacity	10L
> Oil max working pressure	3 bar
> Reserve tank max pressure	10 bar
> Delivery hose length	5m
> Safety valve	4bar





**TYPE OF VEHICLE**



**REFRIGERANT**



**FEATURES**

- LCD screen
- Heat leak (optional)

**PL-AC100 PARAMETERS**

Power supply	220V-240VZ/1PH
Max. working pressure	17.5Bar
Low pressure protection	Less than 1 bar
Electronic scale precision(Recharge)	5G
Compressor	3HP
Size (mm)	1480*760*1115
N.W./G.W	64/80KG

**TYPE OF VEHICLE**



**REFRIGERANT**



**FEATURES**

- Full-automatic
- LCD screen
- Leakage test under negative pressure
- Seal-leak function
- Heat leak (optional)
- Small bottle fill function (optional)
- N2 flush function (optional)

**PL-AC200 PARAMETERS**

Power supply	220V-240VZ/1PH
Max. working pressure	17.5Bar
Low pressure protection	Less than 1 bar
Electronic scale precision(Recharge)	5G
Compressor	3.8HP
Size (mm)	1680*760*1115
N.W./G.W	67/80KG

180-350G/min    800-1500G/min    60L/min

Recovery speed    Recharge speed    Vacuum speed



Electronic scale range



Pag oil bottle capacity



Operating temperature



**TYPE OF VEHICLE**



**REFRIGERANT**



**FEATURES**

- Full-automatic
- LCD screen
- Leakage test under negative pressure
- Seal-leak function
- The system controls nearly all car models for detection oil injection with most updated detection also can upgrade for new car models
- Small bottle fill function (optional)
- N2 flush function (optional)

**PL-AC300 PARAMETERS**

Power supply	220V-240VZ/1PH
Max. working pressure	17.5Bar
Low pressure protection	Less than 1 bar
Electronic scale precision(Recharge)	5G
Electronic scale precision(Freeze oil)	0-2KG
Electronic scale precision(Freeze oil)	1G
Compressor	3.8HP
Size (mm)	1480*760*1115
N.W./G.W	71/87KG

**TICKET PRINTER**



**TYPE OF VEHICLE**



**REFRIGERANT**



**FEATURES**

- Full-automatic
- LCD screen
- Leakage test under negative pressure
- Seal-leak function
- Heat leak (optional)
- Small bottle fill function (optional)
- N2 flush function (optional)

**PL-AC300B PARAMETERS**

Power supply	220V-240VZ/1PH
Max. working pressure	17.5Bar
Low pressure protection	Less than 1 bar
Electronic scale precision(Recharge)	5G
Compressor	3.8HP
Size (mm)	1480*760*1115
N.W./G.W	71/87KG

180-350G/min    800-1500G/min    60L/min

Recovery speed    Recharge speed    Vacuum speed



Electronic scale range



Pag oil bottle capacity



Operating temperature



**TYPE OF VEHICLE**



**REFRIGERANT**



**FEATURES**

- Full-automatic
- LCD screen
- Leakage test under negative pressure
- Seal-leak function
- The system controls nearly all car models for detection oil injection with most updated detection also can upgrade for new car models
- Small bottle fill function (optional)
- N2 flush function (optional)

**PL-AC300B PARAMETERS**

Power supply	220V-240VZ/1PH
Max. working pressure	17.5Bar
Low pressure protection	Less than 1 bar
Electronic scale precision(Recharge)	5G
Electronic scale precision(Freeze oil)	0-2KG
Electronic scale precision(Freeze oil)	1G
Compressor	3.8HP
Size (mm)	1480*760*1115
N.W./G.W	71/87KG

**TICKET PRINTER**







**TYPE OF VEHICLE**



**REFRIGERANT**



**TICKET PRINTER**



**FEATURES**

- Full-automatic
- LCD screen
- Leakage test under negative pressure
- Self-test function
- Heat ball (optional)
- Small bottle fill function (optional)
- N2 flush function (optional)

**PL-AC500J PARAMETERS**

Power supply	220V/50HZ/1PH
Max. working pressure	17.58bar
Low pressure protection	Low limit: 1 bar
Electronic scale precision (Recharge)	5G
Compressor	3.8HP
Size (mm)	1680*W660*H1145
N.W./G.W	76/92KG

180~350G/min



Recovery speed

800~1500G/min



Recharge speed

60L/min



Vacuum speed



10KG

0~35KG



Electronic scale range

300ML



Pag oil bottle capacity

5~50°C



Operating temperature



**TYPE OF VEHICLE**



**REFRIGERANT**



**FEATURES**

- Full-automatic
- LCD screen
- Leakage test under negative pressure
- Self-test function
- Heat ball (optional)
- Small bottle fill function (optional)
- N2 flush function (optional)

**HM-50 PARAMETERS**

Power supply	220V/50HZ/1PH
Max. working pressure	17.58bar
Low pressure protection	Low limit: 1 bar
Electronic scale precision (Recharge)	5G
Compressor	1HP
Size (mm)	1760*W695*H1285
N.W./G.W	114/143KG

500~700G/min



Recovery speed

800~1500G/min



Recharge speed

240L/min



Vacuum speed



20KG

0~50KG



Electronic scale range

300ML



Pag oil bottle capacity

5~50°C



Operating temperature



Free dismantle air-operated, safe, easy, simple operation  
cleaning, changing oil/fluid from car systems (such as  
transmission system, engine system, fuel system, radiator  
system, power steering system, brake fluid system)

09

# OIL/FLUID EXCHANGER



OIL/FLUID  
EXCHANGER

## TRANSMISSION FLUID OIL EXCHANGER

Remove, clean and replace transmission fluid(ATF) from most types and models of automatic transmissions. Help to restore gearbox's speeding performance, to reduce vibration and oil consumption.

Free of disassembling, time efficient and easy operation.

### MODEL NUMBER: GD-322LCD

>   Power	220V/50HZ/1PH
>   Operation	Automatic
>   Working Pressure	70~90PSI
>   Suit For	Gasoline/diesel vehicles
>   Meas.	650*520*1160mm
>   G.W.	60kgs
>   Operating Temperature	Less than 80 °C

### MODEL NUMBER: GA-322

>   Power	Air Compressor
>   Operation	
>   Working Pressure	70~90PSI
>   Suit For	Gasoline/diesel vehicles
>   Meas.	650*520*1160mm
>   G.W.	38.5kg
>   Operating Temperature	Less than 80 °C

### MODEL NUMBER: GD-322B

>   Power	220V/50HZ/1PH
>   Operation	
>   Working Pressure	70~90PSI
>   Suit For	Gasoline/diesel vehicles
>   Meas.	650*520*1160mm
>   G.W.	38.5kg
>   Operating Temperature	Less than 80 °C



INCLUDES:  
Transmission fluid  
exchanger unit  
with fitting

Pressure fill/  
return hose

(2) fluid collecting  
bottles

(24) assorted  
fitting/adapters

(8) assorted  
hoses with  
clamps  
& O-rings

Tool box








**GB-522A/GD-522A**  
 WATER TANK MAINTENANCE  
 MACHINE

## WATER TANK MAINTENANCE MACHINE

Recycle clean and exchange waste coolant/water directly from the radiator spout or reservoir tank. Can be used on cars, SUV's and trucks. With the cooling system simply connected; the old fluid is sucked out and new fluid is filled in. Quick and easy for operation.

### MODEL NUMBER: GB-522A

>   Power	Air Compressor
>   Operation	
>   Working Pressure	85~100PSI
>   Suit For	Gasoline/diesel vehicles
>   Operating Temperature	Less than 80 °C

### MODEL NUMBER: GD-522A

>   Power	220V/50HZ/1PH
>   Operation	
>   Working Pressure	85~100PSI
>   Suit For	Gasoline/diesel vehicles
>   Operating Temperature	Less than 80 °C




**GC-622A/GD-622A**  
 POWER STEERING  
 FLUID OIL EXCHANGER

### MODEL NUMBER: GC-622A

>   Power	Air Compressor
>   Operation	
>   Working Pressure	85~100PSI
>   Suit For	Gasoline/diesel vehicles
>   Operating Temperature	Less than 80 °C

### MODEL NUMBER: GD-622A

>   Power	220V/50HZ/1PH
>   Operation	
>   Working Pressure	85~100PSI
>   Suit For	Gasoline/diesel vehicles
>   Operating Temperature	Less than 80 °C

## SYSTEM CLEANER

Free of disassembling the engine aluminium pump.  
Effectively solve the problem of difficult starting, unsteady idle and too much fuel consumption.

### MODEL NUMBER: GL-122

>   Power	Air Compressor
>   Operation	
>   Working Pressure	70~90PSI
>   Suit For	Gasoline/diesel vehicles
>   Operating Temperature	Less than 80°C

### MODEL NUMBER: GD-122

>   Power	220V/50HZ/1PH
>   Operation	
>   Working Pressure	80~120PSI
>   Suit For	Gasoline/diesel vehicles
>   Operating Temperature	Less than 80°C

### MODEL NUMBER: GF-220

>   Power	Air Compressor
>   Operation	
>   Working Pressure	70~90PSI
>   Suit For	Gasoline/diesel vehicles
>   Operating Temperature	Less than 80°C

### MODEL NUMBER: GD-220

>   Power	DC 12V
>   Operation	
>   Working Pressure	80~120PSI
>   Suit For	Gasoline/diesel vehicles
>   Operating Temperature	Less than 80°C



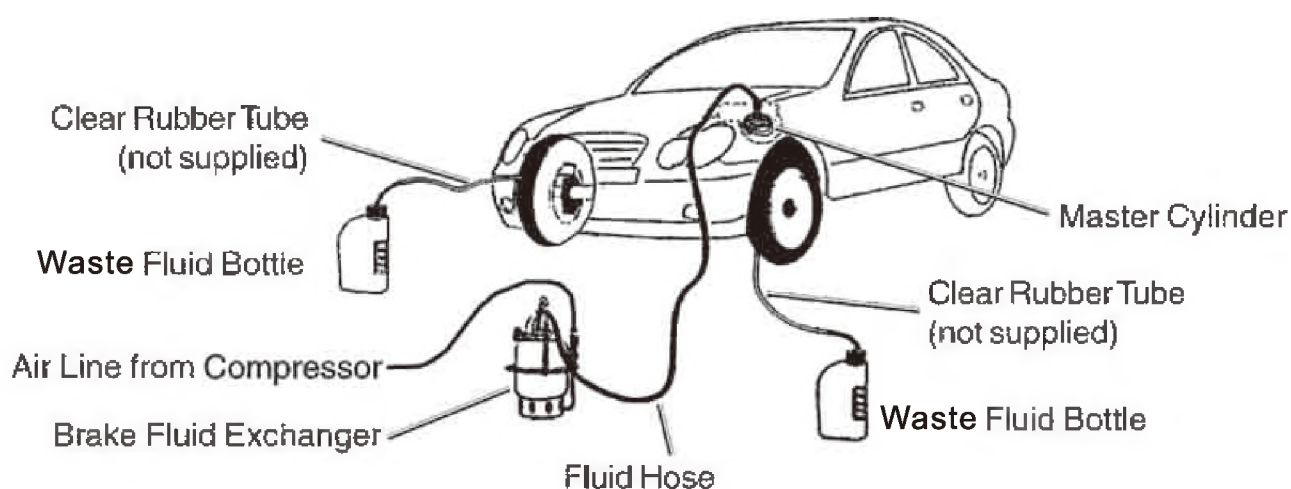


## BRAKE FLUID EXCHANGER

The simplified air-operated two-chamber brake bleeding device is suitable for bleeding hydraulic brakes and clutches of all motor vehicles. Equipped with an inner elastic hermetical membrane to separate oil from water in order to avoid the risk of being emulsified

### MODEL NUMBER: GD-422

>   Power	220V/50HZ/1PH
>   Operation	
>   Working Pressure	85~100PSI
>   Suit For	Gasoline/diesel vehicles
>   Meas.	650*520*1160mm
>   G.W.	38.5kg
>   Operating Temperature	Less than 80 °C





## BRAKE BLEEDING

The simplified air-operated two-chamber brake bleeding device is suitable for bleeding hydraulic brakes and clutches of all motor vehicles. Equipped with an inner elastic hermetical membrane to separate oil from water in order to avoid the risk of being emulsified

### ITEM: GS-432

> Tank capacity	6L
> Oil max working pressure	3 bar
> Reserve tank max pressure	10 bar
> Delivery hose length	5m
> Safety valve	4bar

### ITEM: GS-452

> Tank capacity	10L
> Oil max working pressure	3 bar
> Reserve tank max pressure	10 bar
> Delivery hose length	5m
> Safety valve	4bar



# FUEL INJECTOR TESTER & CLEANER

10







#### FEATURES

- Simple oil stage automatic one
- With separated ultrasonic bath
- Adjust oil pressure electronically
- Working parameter could be set randomly

#### HP-4 PARAMETERS

Power supply	AC220V±10% 50/60Hz
Environment temperature	5-40℃
Relative humidity	≤85%
Environmental magnetic intensity	< 400A/M
Ultrasonic power	100W
Injector operating frequency (rpm)	0-9999 rpm variable in 50rpm
Injector pulse	0-9999 pulses variable in 50 pulses
Spray time	0-10Min
Pulse width (ms)	0-20 ms in 0.1ms increments
System pressure	0-0.6MPa
Cylinder volume	120ml
Dimensions (mm)	380*600*780



With integrated ultrasonic bath

#### HP-4A & HP-4B PARAMETERS

Power supply	AC220V±10% 50/60Hz
Environment temperature	5-40℃
Relative humidity	≤85%
Environmental magnetic intensity	< 400A/M
Ultrasonic power	100W
Injector operating frequency (rpm)	0-9999 rpm variable in 50rpm
Injector pulse	0-9999 pulses variable in 50 pulses
Spray time	0-10Min
Pulse width (ms)	0-20 ms in 0.1ms increments
System pressure	0-0.6MPa
Cylinder volume	120ml
Dimensions (mm)	360*540*580



With separated ultrasonic bath



Standard Accessory



### HP-6 PARAMETERS

Power supply	AC220V±10% 50/60Hz
Environment temperature	5-40℃
Relative humidity	< 85%
Environmental magnetic intensity	< 400A/M
Ultrasonic power	100W
Injector operating frequency (rpm)	0-950 rpm variable in 50rpm
Injector pulse	0-9 950 pulses variable in 50 pulses
Spiky time	0-10Min.
Pulse width (ms)	0-20 ms in 0.1ms increments
System pressure	0-0.6Mpa
Cylinder volume	120ml
Dimension(L*W*H(mm))	580*610*780
N.W.G.W	60/52KG

### HP-6C PARAMETERS

Power supply	AC220V±10% 50/60Hz
Environment temperature	5-40℃
Relative humidity	< 85%
Environmental magnetic intensity	< 400A/M
Ultrasonic power	100W
Injector operating frequency (rpm)	0-9 500 rpm variable in 50rpm
Injector pulse	0-9 000 pulses variable in 100 pulses
Spiky time	0-10Min.
Pulse width (ms)	0-20 ms in 0.1ms increments
System pressure	0-0.6Mpa
Cylinder volume	140ml
Dimension(L*W*H(mm))	580*640*780 470*450*780
N.W.G.W	38/41KG

### HP-6A & HP-6B PARAMETERS

Power supply	AC220V±10% 50/60Hz
Environment temperature	5-40℃
Relative humidity	< 85%
Environmental magnetic intensity	< 400A/M
Ultrasonic power	100W
Injector operating frequency (rpm)	0-9 950 rpm variable in 50rpm
Injector pulse	0-9 950 pulses variable in 50 pulses
Spiky time	0-10Min.
Pulse width (ms)	0-20 ms in 0.1ms increments
System pressure	0-0.6Mpa
Cylinder volume	120ml
Dimension(L*W*H(mm))	580*640*980
N.W.G.W	22/25KG(HP-6A) 25/27KG(HP-6B)



### HP-6 FUEL INJECTOR TESTER & CLEANER

#### FEATURES

- Simple oil stage economic one
- With separated ultrasonic bath
- Adjust oil pressure electronically
- Working parameter could be set randomly



With integrated ultrasonic bath



### HP-6C FUEL INJECTOR TESTER & CLEANER

#### FEATURES

- Adjust oil pressure electronically
- 9 button control all functions
- LED display with computerized controlling system



With separated ultrasonic bath

Standard Accessory



## FEATURES

- Simple oil stage economic one
- With separated ultrasonic bath
- Adjust oil pressure electrically
- Working parameter could be set randomly

## HP-8 PARAMETERS

Power supply	AC220V±10%, 50/60Hz
Environment temperature	5-40 °C
Relative humidity	< 85%
Environmental magnetic intensity	< 400A/M
Ultrasonic power	100W
Injector operating frequency (rpm)	0-9,950 rpm variable in 50rpm
Injector pulse	0-9,950 pulses variable in 50 pulses
Spray time	0-10Min.
Pulse width (µm):	0-20 ms in 0.1ms increments
System pressure	0-0.6MPA
Cylinder volume	120ml
Dimension: l*w*h(mm)	580*600*760



With integrated ultrasonic bath

## HP-8A & HP-8B PARAMETERS

Power supply	AC220V±10%, 50/60Hz
Environment temperature	5-40 °C
Relative humidity	< 85%
Environmental magnetic intensity	< 400A/M
Ultrasonic power	100W
Injector operating frequency (rpm)	0-9,950 rpm variable in 50rpm
Injector pulse	0-9,950 pulses variable in 50 pulses
Spray time	0-10Min.
Pulse width (µm):	0-20 ms in 0.1ms increments
System pressure	0-0.6MPA
Cylinder volume	120ml
Dimension: l*w*h(mm)	560*540*580



With separated ultrasonic bath



Standard Accessory

## FEATURES

- With separated ultrasonic bath
- Adjust oil pressure electronically
- Siemens oil pump with high & stable performance
- LCD display with computerized controlling system, one pole control all function
- HP-7C With integrated ultrasonic bath
- HP-7E With separated ultrasonic bath

## HP-7C & 7E PARAMETERS

Power supply	AC220V±10% 50/60Hz
Environment temperature	10-40℃
Relative humidity	< 85%
Environmental magnetic intensity	< 400A/M
Ultrasonic power	70W
Injector operating frequency (rpm)	0-7,500 rpm variable in 50rpm
Injector pulse	0-3,900 pulses variable in 100 pulses
Spray time	0-10min
Pulse width (pulse)	0-20 ms in 0.1ms increments
System pressure	0-0.6MPa
Cylinder volume	140ml
Dimension L*W*H(mm)	580*540*520/ 450*420*730
N.W./G.W	35/10KG



## FEATURES

- LED display, strong and durable
- Ultrasonic cleaning trough built-in
- With heating function
- Automatic oil drain
- Equip with high quality SIEMENS pump, make it durable

## HP-2M PARAMETERS

Turning speed range	0-7500rpm
Timing pulse length	0-9900times/step length 100
Pulse length	0-20ms step length 0.1ms
Timing	0-10min
System pressure	0-0.6Mpa
Ultrasonic cleaning power	70W
Power supply	AC220±10% 50/60Hz
Working temperature	10℃-40℃
Stimulant signals	0--5V
Output scope of the pulsed signals	+5V -12V
Mainbody mass	580*540*513mm
N.W./G.W	21KG



## FUNCTIONS

- Ultrasonic cleaning, dismantle the carbide of the injector;
- Injector test, simulate engine running condition, test injector in different speed range, Check and test injectors's injection situation atomization/spraying angle/spraying mount/spraying uniformity.
- leakage and block test;
- Uniquely designed various compound holder for all kinds of side-inlet injectors;
- With reverse flush function, to clean inside out, to improve clean efficiency;
- With a set of adaptors to clean injectors without dismantling it from the engine.






## HW-31026A

MOBILE PRESSURE  
SPRAYER

Mobile Pressure sprayers are suitable for the non-toxic spraying of detergent liquids, low density lubrication oils and similar for washing motor vehicles, grafting, lubricating, distributing mould release oils, etc. Work autonomously without requiring continuous connection to the compressed-air line.

### FEATURES

- Large tray for tools, filters etc, on the top of the tank
- The unit must be pressurized by air compressor (max Pressure 7 bar or 100 psi)
- Include a safety valve to avoid overpressure 7 bar

### HW-31026 PARAMETERS

> Tank capacity	30L/8Gallon
> Air Pressure for spray	8bar/116Psi
> Spray Hose	∅ 10mm*6.5mm
> Spray Gun Length	620mm
> Air Inlet Connection	G 1/4" fitting or Quick Plug
> Weight	13.5kg
> CBM:	0.12m <sup>3</sup>
> Dimension(mm):	370*355*920

### HW-31026A PARAMETERS

> Tank capacity	30L/8Gallon
> Air Pressure for spray	8bar/116Psi
> Spray Hose	∅ 10mm*6.5mm
> Spray Gun Length	620mm
> Air Inlet Connection	G 1/4" fitting or Quick Plug
> Weight	14.5kg
> CBM:	0.12m <sup>3</sup>
> Dimension(mm):	370*355*920




## HW-51026A

MOBILE PRESSURE SPRAYER  
(STAINLESS STEEL)

Mobile Pressure sprayers are suitable for the non-toxic spraying of detergent liquids, low density lubrication oils and similar for washing motor vehicles, grafting, lubricating, distributing mould release oils, etc. Work autonomously without requiring continuous connection to the compressed-air line.

### FEATURES

Stainless Steel Mobile Pressure Sprayer HW-51026  
Made from 304 stainless steel for extra strength and durability

### HW-51026 PARAMETERS

> Tank capacity	30L/8Gallon
> Air Pressure for spray	8bar/115Psi
> Spray Hose	∅ 10mm*6.5mm
> Spray Gun Length	620mm
> Air Inlet Connection	G 1/4" fitting or Quick Plug
> Weight	14kg
> CBM:	0.12m <sup>3</sup>
> Dimension(mm):	370*355*920

### HW-51026A PARAMETERS

> Tank capacity	30L/8Gallon
> Air Pressure for spray	8bar/115Psi
> Spray Hose	∅ 10mm*6.5mm
> Spray Gun Length	620mm
> Air Inlet Connection	G 1/4" fitting or Quick Plug
> Weight	13kg
> CBM:	0.12m <sup>3</sup>
> Dimension(mm):	370*355*920

## STAINLESS STEEL

### HW-5380 PARAMETERS

>   Tank capacity	80L
>   Air inlet Pressure	3~4bar
>   Working Pressure	2.5~3 bar
>   Foam Gun Diameter	Φ 17* Φ 12
>   Draining Hose Length	8m



### HW-5330 PARAMETERS

>   Tank capacity	30L
>   Air inlet Pressure	3~4bar
>   Working Pressure	2.5~3 bar
>   Foam Gun Diameter	Φ 12* Φ 8.5
>   Draining Hose Length	8m



### HW-5360 PARAMETERS

>   Tank capacity	60L
>   Air inlet Pressure	3~4bar
>   Working Pressure	2.5~3 bar
>   Foam Gun Diameter	Φ 17* Φ 12
>   Draining Hose Length	8m

STAINLESS STEEL

### HW-3330 PARAMETERS

>   Tank capacity	30L
>   Air inlet Pressure	3~4bar
>   Working Pressure	2.5~3 bar
>   Foam Gun Diameter	Φ 12* Φ 8.5
>   Draining Hose Length	8m



### HW-3360 PARAMETERS

>   Tank capacity	60L
>   Air inlet Pressure	3~4bar
>   Working Pressure	2.5~3 bar
>   Foam Gun Diameter	Φ 17* Φ 12
>   Draining Hose Length	8m

### HW-3380 PARAMETERS

>   Tank capacity	80L
>   Air inlet Pressure	3~4bar
>   Working Pressure	2.5~3 bar
>   Foam Gun Diameter	Φ 17* Φ 12
>   Draining Hose Length	8m

